

FLOOR PLAN KEYNOTES

- #KEYNOTE
- 17

BIKE RACK, WALL MOUNTED,  
20 SF PER BIKE (17 TOTAL)
- 19

MAILBOXES, SEE 2/HO-3
- 22

MOP SINK
- 24

ACCESSIBLE PARKING SIGN,  
POLE MOUNTED, SEE 13/HO-3
- 27

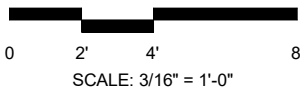
TRIPLE BASIN OIL SEPARATOR
- 29

GAS METER
- 30

TRENCH DRAIN
- 33

BIKE REPAIR STATION
- 34

TRANSIT STATUS MONITOR, 7  
AFF



3	12/05/2023	ISSUED FOR REVISED PERMIT
2	11/14/2022	ISSUED FOR CD QA/QC
1	10/14/2022	ISSUED FOR PERMIT
NO	DATE	ISSUE DESCRIPTION

COPYRIGHT 2022 SULLIVAN GOULETTE & WILSON, LTD. EXPRESSLY RESERVES ITS COMMON LAW COPYRIGHT AND OTHER PROPERTY RIGHTS IN THESE PLANS. THESE PLANS ARE NOT TO BE REPRODUCED, CHANGED OR COPIED IN ANY FORM OR MANNER WHATSOEVER, NOR ARE THEY TO BE ASSIGNED TO ANY THIRD PARTY, WITHOUT FIRST OBTAINING THE EXPRESSED WRITTEN PERMISSION AND CONSENT OF SULLIVAN GOULETTE & WILSON, LTD.

THESE DRAWINGS MAY HAVE BEEN REPRODUCED AT A SIZE DIFFERENTLY THAN ORIGINALLY DRAWN. OWNER AND ARCHITECT ASSUME NO RESPONSIBILITY FOR USE OF INCORRECT SCALE.

CONTRACTOR SHALL VERIFY ALL EXISTING CONDITIONS PRIOR TO PROCEEDING WITH CONSTRUCTION AND NOTIFY ARCHITECT IMMEDIATELY OF ANY DISCREPANCIES OR CONFLICTS.

PRINCIPAL: Approver P.M.: KW / MS  
QC BY: CP / SR DRAWN BY: EB



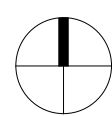
444 N MICHIGAN AVE  
SUITE 1850  
CHICAGO, IL 60611  
Ph 312.988.7412  
Fx 312.988.7409  
www.sgvarch.com  
PROFESSIONAL DESIGN FIRM  
License Number: 184-001505  
Expiration Date: April 30, 2023

3160 N BROADWAY

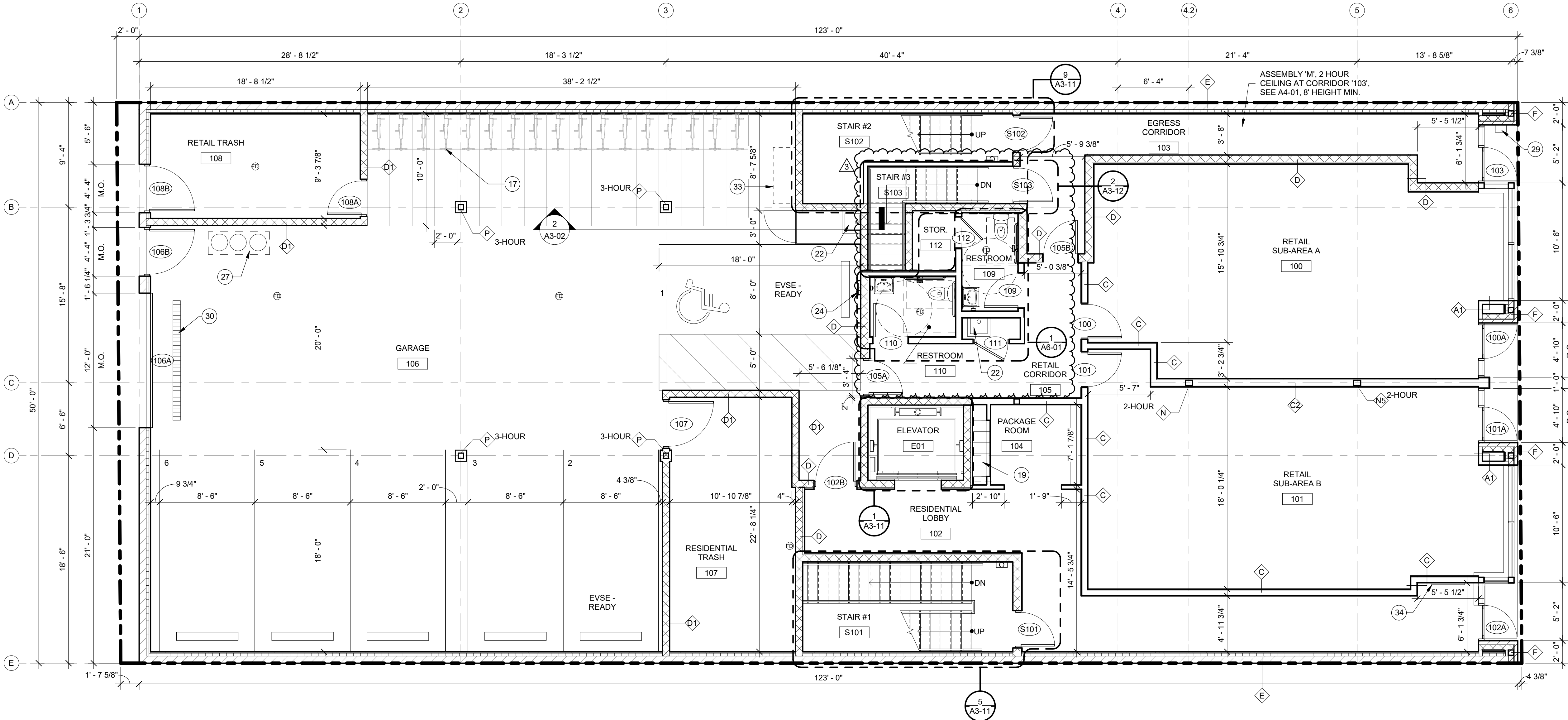
CHICAGO, ILLINOIS 60657

FIRST FLOOR PLAN

NORTH



A1-01



1 FIRST FLOOR PLAN  
SCALE: 3/16" = 1'-0"