

NORWOOD PARK 1,200 SF OFFICE/COMMERCIAL CONDO FOR SALE WITH 7 PARKING SPACES INCLUDED



Looking to purchase your own office space? Check out this very desirable Norwood Park location. Plenty of space for multiple employees or rent out an office for extra income. Sound proof walls, private side entrance and expandable waiting area with sink and refrigerator. Easily accessible from the Metra station across the street or nearby Kennedy expressway. One interior parking space plus 6 exterior assigned spaces included with the purchase of the office. Perfect for a doctor, attorney, therapist or any other non-retail use.

Size:	1,200 SF
Sale Price:	\$195,000
Taxes (2023):	\$9,698.15 (PIN#13061100541004)
HOA:	\$393 per Month—Covers water, maintenance, insurance, management and garbage.
Parking:	1 interior space + 6 exterior assigned spaces
Zoning:	B3-2

CRAIG WOLF

 847-989-9653

 CRAIG@STRAUSSREALTY.COM

STRAUSS REALTY, LTD.
4220 W. MONTROSE AVENUE
CHICAGO, ILLINOIS 60641
PHONE: 773-736-3600

STRAUSS

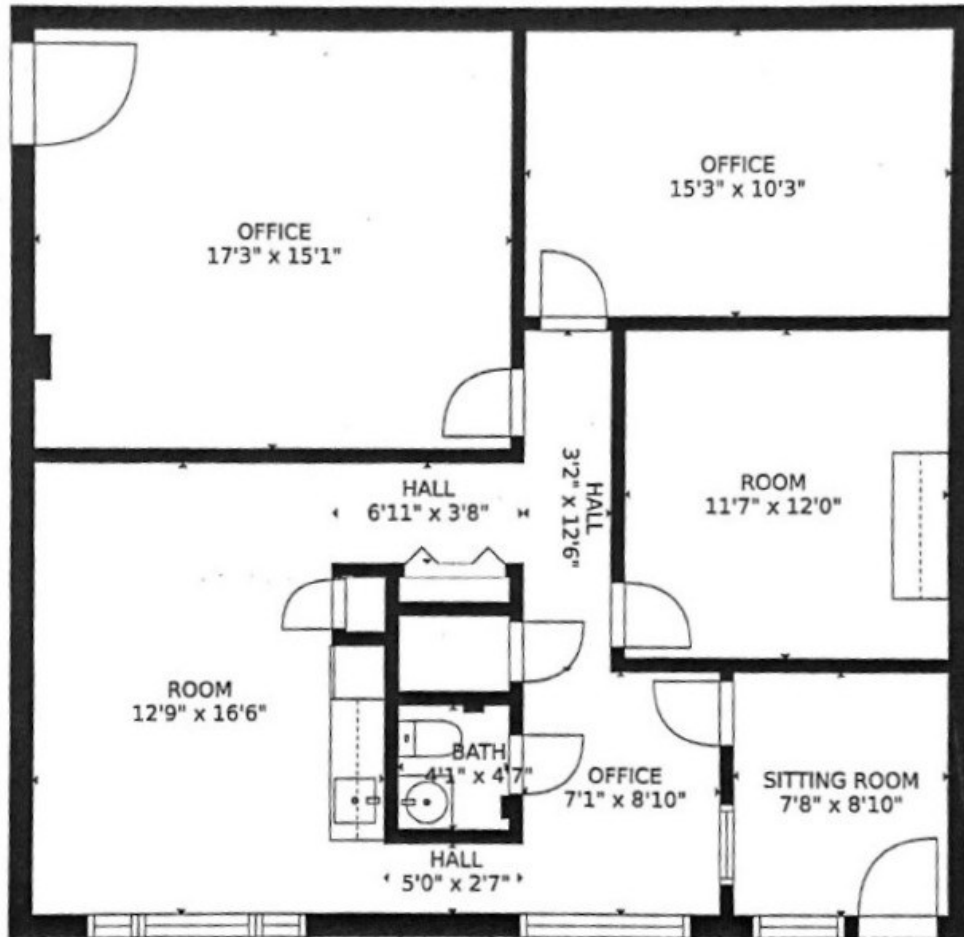
REALTY, LTD.

6121 N. NORTHWEST HWY.

UNIT 104

CHICAGO, ILLINOIS 60631

FLOOR PLAN



CRAIG WOLF

847-989-9653

CRAIG@STRAUSSREALTY.COM

STRAUSS REALTY, LTD.

4220 W. MONTROSE AVENUE

CHICAGO, ILLINOIS 60641

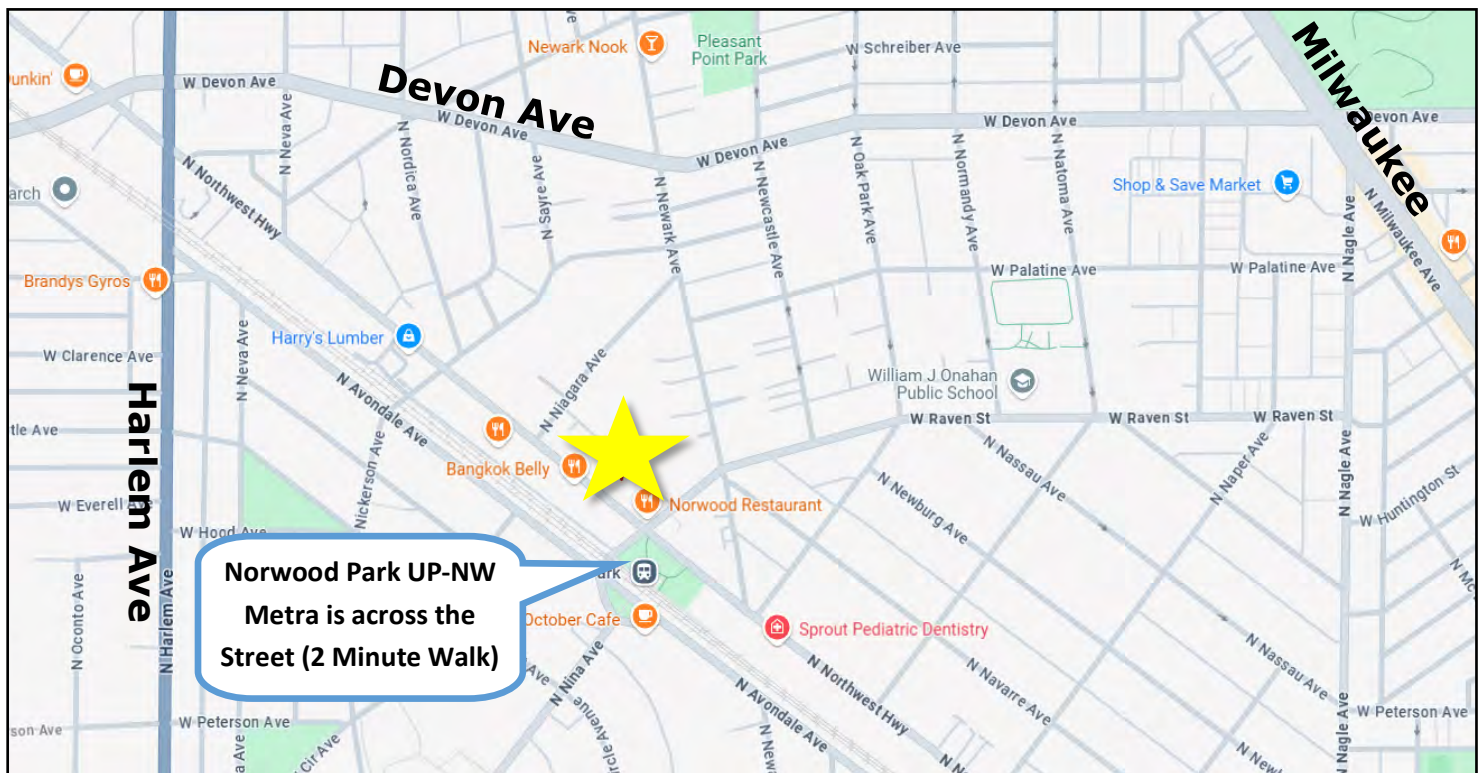
PHONE: 773-736-3600

DEMOGRAPHICS

2023 Estimates by Costar Research

	1 Mile	2 Miles	3 Miles
Population	21,980	88,425	194,819
Median Age	45	44.9	43.9
Households	9,207	34,665	75,005
Avg. Household Size	2.3	2.4	2.5
Avg. Household Income	\$112,228	\$120,861	\$116,440
Median Household Income	\$91,819	\$96,844	\$90,596

MAP



Surrounded by local businesses of Norwood Park.
Located just across the street from the Metra station and Centennial Park.

CRAIG WOLF

 847-989-9653

 CRAIG@STRAUSSREALTY.COM

STRAUSS REALTY, LTD.

4220 W. MONTROSE AVENUE

CHICAGO, ILLINOIS 60641

PHONE: 773-736-3600