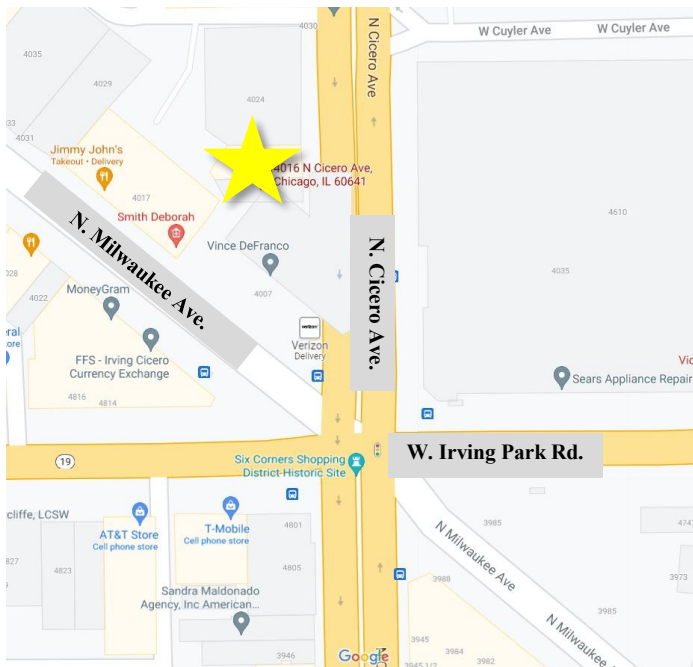


STRAUSS

REALTY, LTD.

4016 N. CICERO AVE.
CHICAGO, IL. 60641

SIX CORNERS STOREFRONT FOR LEASE ON WELL-TRAVELED CICERO (24K VPD)



- ◆ **Space Size: ±1,253 SF**
- ◆ **Lease Rate: \$20 PSF Modified Gross (\$2,088.33 per Month)**
- ◆ **Zoning: B3-1**

Details:

1,253 SF retail storefront on well-traveled Cicero Ave (24,200 Vehicles Per Day). Located at Six Corners intersection of Milwaukee, Irving Park, & Cicero. Great signage allows for high visibility. Perfect location for any retail or office user. Immediately surrounded by national retailers (Target, Walgreens, Ross Dress for Less, Marshalls) and multiple new construction developments.



MJ WEINBERGER

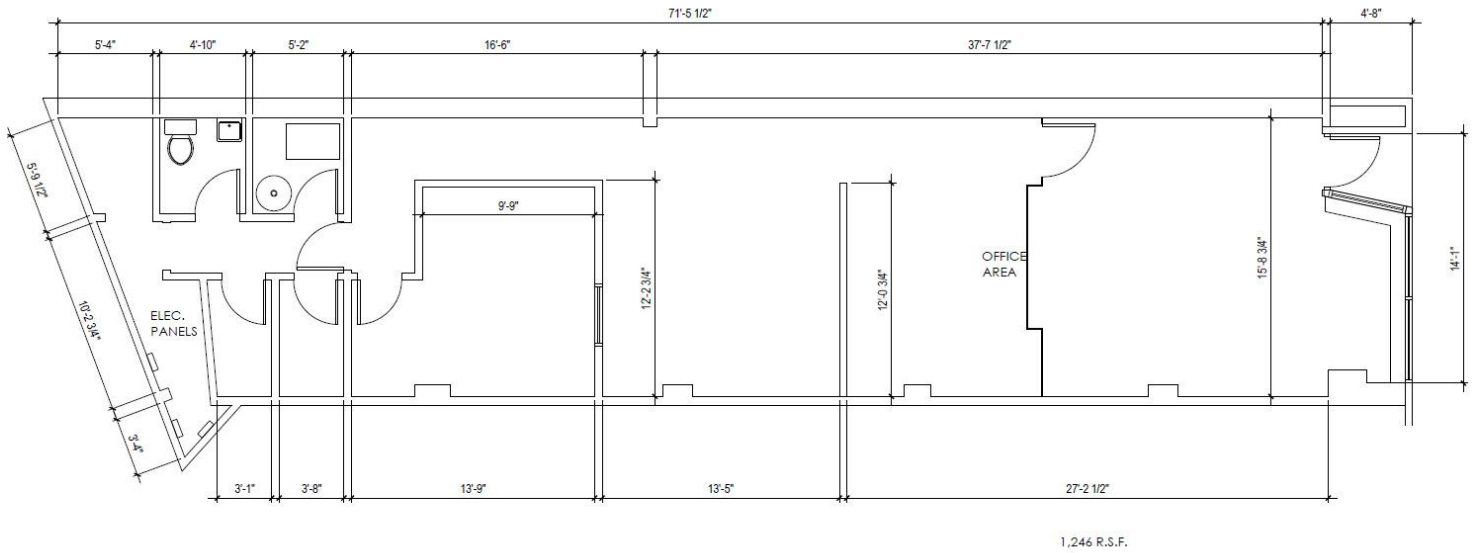
847-334-2587

MJ@STRAUSSREALTY.COM

STRAUSS REALTY, LTD.
4220 W. MONTROSE AVENUE
CHICAGO, ILLINOIS 60641
PHONE: 773-736-3600

This flyer was produced using data from private and government sources deemed reliable. The information herein is provided without representation.

FLOOR PLAN



MJ WEINBERGER
847-334-2587
MJ@STRAUSSREALTY.COM

STRAUSS REALTY, LTD.
4220 W. MONTROSE AVENUE
CHICAGO, ILLINOIS 60641
PHONE: 773-736-3600