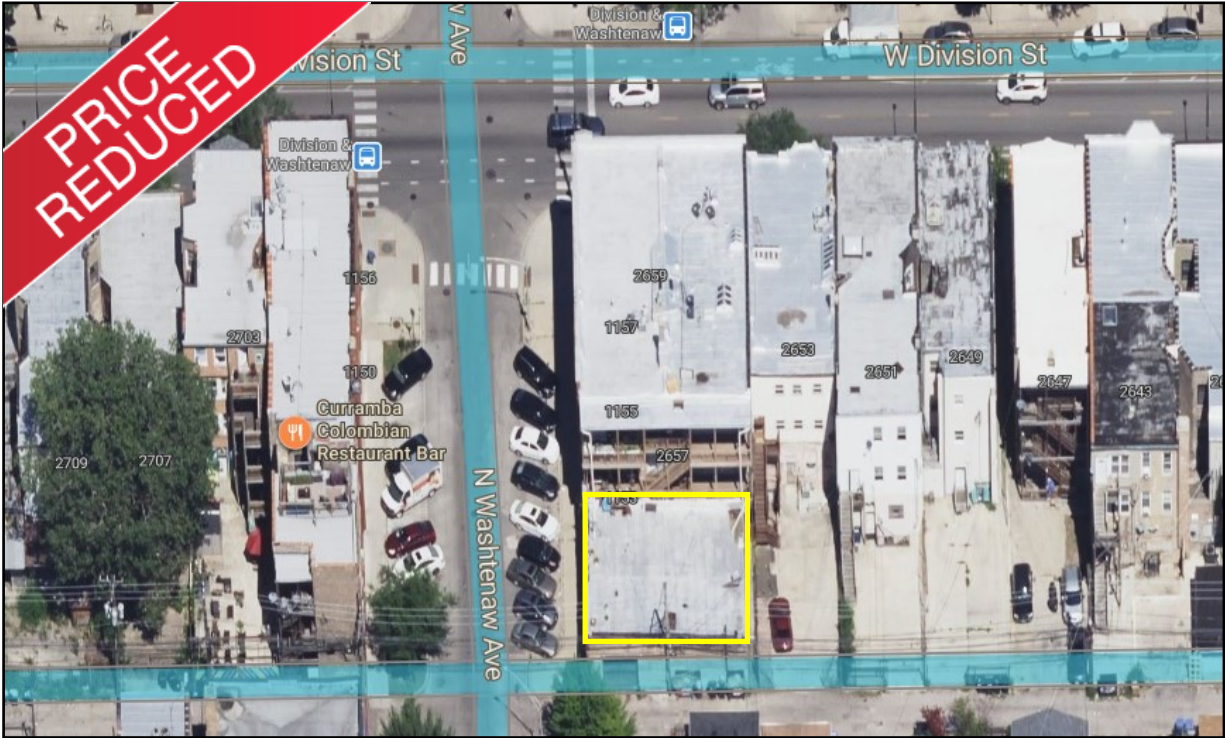
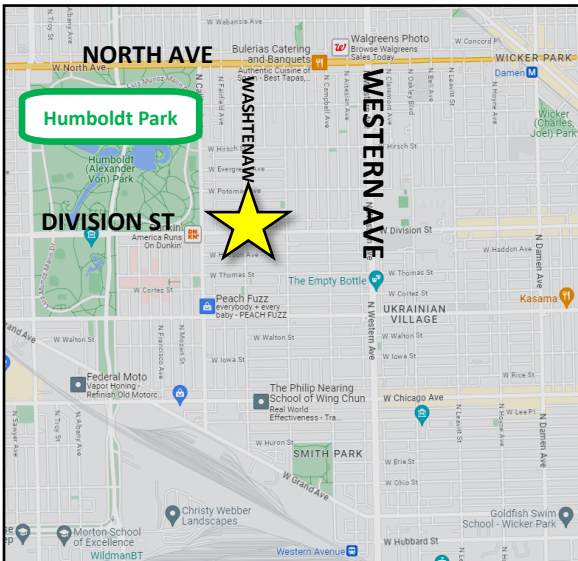


FOR LEASE: 2,000 SF GARAGE AT DIVISION & WASHTENAW



Rear garage situated in Humboldt Park, spanning 2,000 square feet. The garage features a 12-foot ceiling, an overhead door, and convenient alley access.



Size:	2,000 SF
Lease Price:	\$1,800 per Month (Gross) \$1,500 per Month
Zoning:	B1-1
Overhead Door:	1
Dimensions:	50' Wide x 40' Deep
Ceiling:	12'
Location:	Located in Paseo Boricua area —known as "Little Puerto Rico".



CRAIG WOLF
847-989-9653
CRAIG@STRAUSSREALTY.COM

STRAUSS REALTY, LTD.
4220 W. MONTROSE AVENUE
CHICAGO, ILLINOIS 60641
PHONE: 773-736-3600