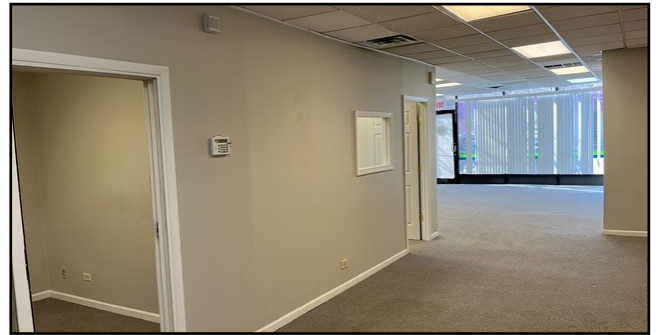


STRAUSS

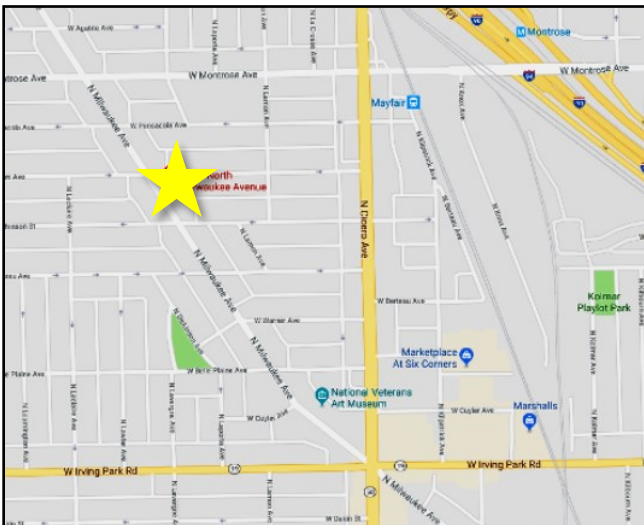
REALTY, LTD.

4253 N. MILWAUKEE AVENUE
CHICAGO, ILLINOIS 60626

GREAT OFFICE SPACE ON BUSY MILWAUKEE AVENUE



Great office space on busy Milwaukee Avenue just south of Montrose. Space has 2 offices (or 1 office and a conference room), a large work/reception area, new kitchenette, one bathroom and plenty of storage. Owner will entertain all reasonable offers.

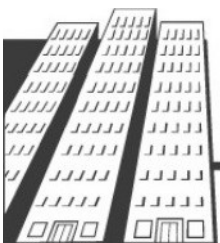


Space Available: 1,000 Square Feet

Lease Rate: \$14.40 PSF (\$1,200 per Month)

Lease Type: Gross

Zoning: B3-3



PATRICK DUFFY

773-736-3600

DUFFY@STRAUSSREALTY.COM

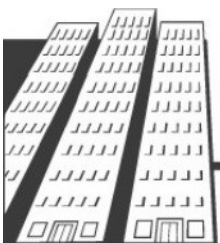
STRAUSS REALTY, LTD.

4220 W. MONTROSE, AVENUE

CHICAGO, ILLINOIS 60641

PHONE: 773-736-3600

GREAT OFFICE SPACE ON BUSY MILWAUKEE AVENUE



PATRICK DUFFY
773-736-3600
DUFFY@STRAUSSREALTY.COM

STRAUSS REALTY, LTD.
4220 W. MONTROSE, AVENUE
CHICAGO, ILLINOIS 60641
PHONE: 773-736-3600