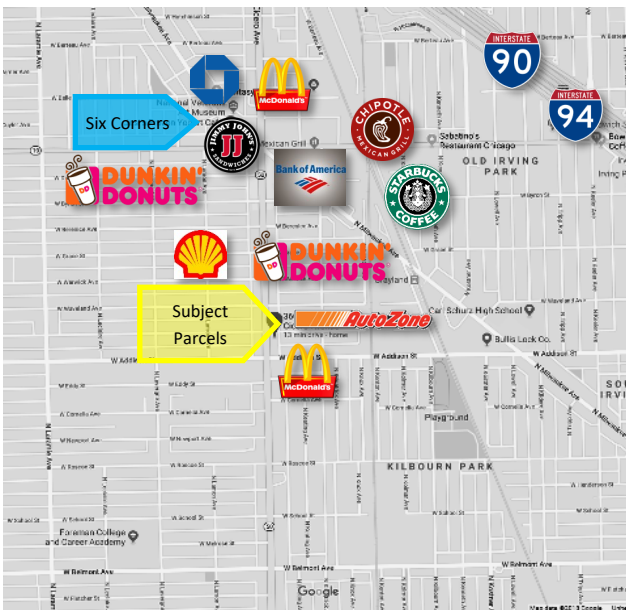


±31,535 SF DEVELOPMENT OPPORTUNITY



Rare opportunity to acquire a city block at the highly visible stoplight corner of Cicero and Addison. Located near busy Six Corners Marketplace. Parcel is ±31,535 SF of Land with 265' of Frontage along Cicero Ave.



Parcel Size:

265' x 119' (10 City Lots)
±31,535 SF of Land

Sale Price:

\$2,900,000

Taxes:

\$39,289.29 (2021)

Zoning:

B3-1

Sub-Market:

Old Irving Park

Public Transit:

0.6 Miles to Grayland Metra Stop
and walking distance to CTA

Highway Access:

0.5 Miles to I-90 and I-94



HOWARD GOULD

847-833-3355

GOULD@STRAUSSREALTY.COM

MJ WEINBERGER

847-334-2587

MJ@STRAUSSREALTY.COM

STRAUSS REALTY, LTD.

4220 W. MONTROSE AVE.

CHICAGO, ILLINOIS 60641

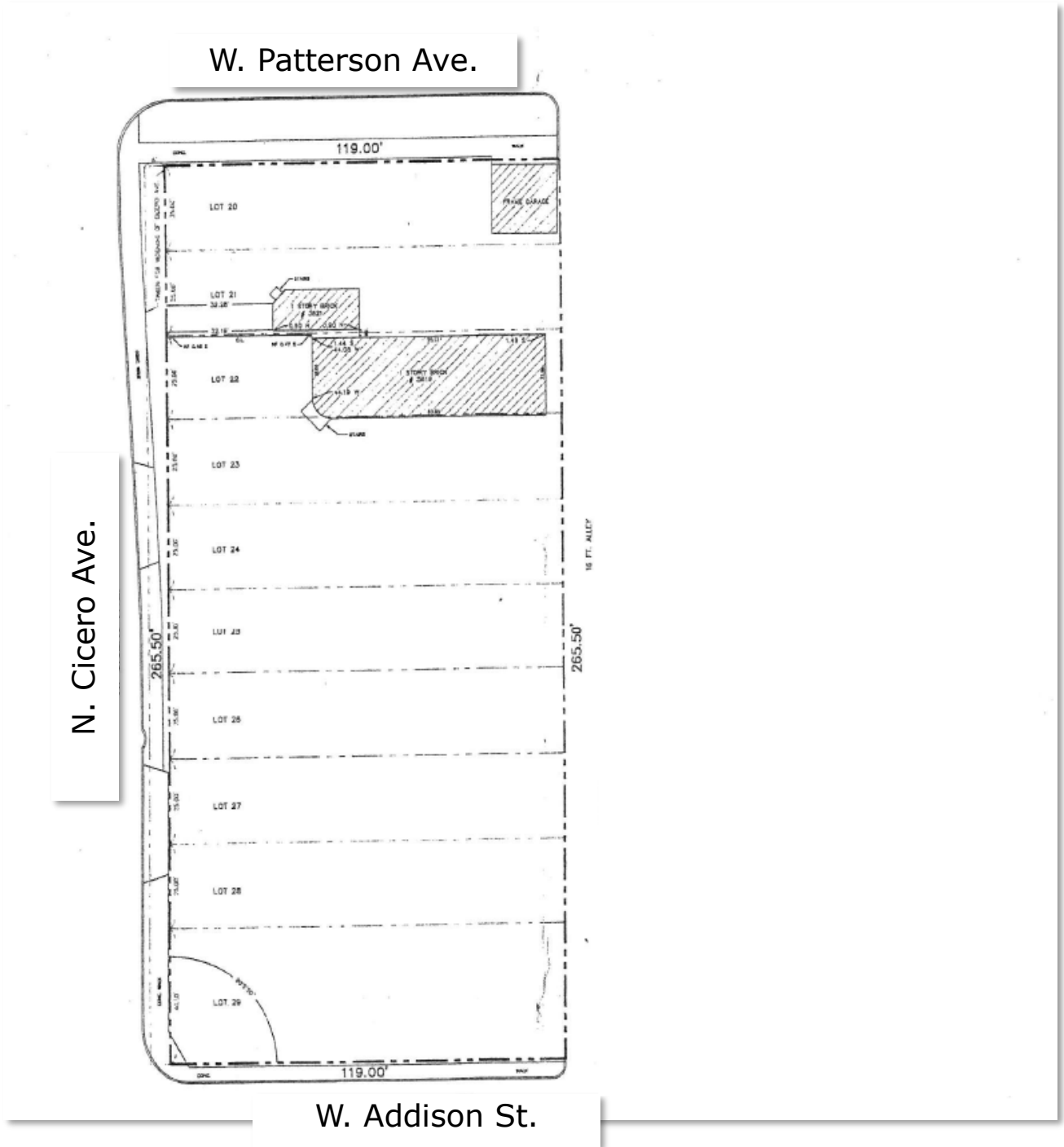
PHONE: 773-736-3600

STRAUSS

REALTY, LTD.

3601 N. CICERO AVE.
CHICAGO, IL. 60641

±31,535 SF DEVELOPMENT OPPORTUNITY



HOWARD GOULD

847-833-3355

GOULD@STRAUSSREALTY.COM

MJ WEINBERGER

847-334-2587

MJ@STRAUSSREALTY.COM

STRAUSS REALTY, LTD.

4220 W. MONTROSE AVE.

CHICAGO, ILLINOIS 60641

PHONE: 773-736-3600