

STRAUSS

REALTY, LTD.

4217 N. MILWAUKEE AVE
CHICAGO, IL. 60641

±2,200 SF STOREFRONT IN THE HEART OF PORTAGE PARK



Great opportunity to rent a storefront in the heart of Portage Park right next to BP Gas Station. Space has been renovated beautifully in recent years. Ideal for beauty salon, tattoo shop and creative use.

SPACE SIZE: ±2,200 SF
LEASE PRICE: \$2,750 PER MONTH
LEASE TYPE: MODIFIED GROSS
ZONING: B3-1



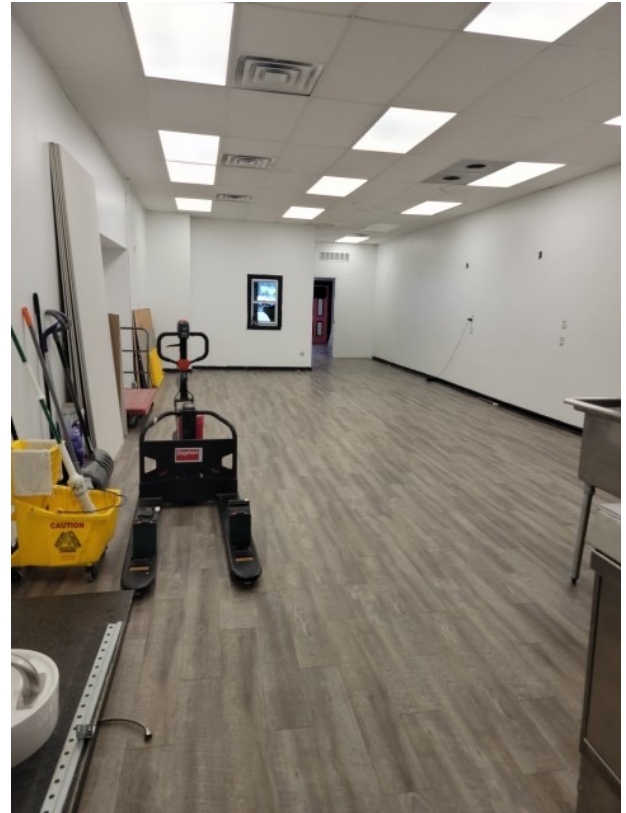
MJ WEINBERGER

847-334-2587

MJ@STRAUSSREALTY.COM

STRAUSS REALTY, LTD.
4220 W. MONTROSE AVENUE
CHICAGO, ILLINOIS 60641
PHONE: 773-736-3600

**±2,200 SF STOREFRONT
IN THE HEART OF PORTAGE PARK**



SPACE SIZE:

±2,200 SF

LEASE PRICE:

\$2,750 PER MONTH

LEASE TYPE:

MODIFIED GROSS

ZONING:

B3-1



MJ WEINBERGER

847-334-2587

MJ@STRAUSSREALTY.COM

STRAUSS REALTY, LTD.
4220 W. MONTROSE AVENUE
CHICAGO, ILLINOIS 60641
PHONE: 773-736-3600