

GUT RENOVATED RETAIL SPACE FOR LEASE IN THE HEART OF ROSCOE VILLAGE



1,670 SF gut renovated retail/office space for lease in the heart of Roscoe Village.

Size:	1,670 SF
Rental Rate:	\$20 PSF
Lease Type:	Net
Pass-Thru:	\$12 PSF Approximately
Zoning:	B3-1



CRAIG WOLF
847-989-9653
CRAIG@STRAUSSREALTY.COM

STRAUSS REALTY, LTD.
4220 W. MONTROSE AVENUE
CHICAGO, ILLINOIS 60641
PHONE: 773-736-3600

GUT RENOVATED RETAIL SPACE FOR LEASE IN THE HEART OF ROSCOE VILLAGE



Ideally situated in heart of Roscoe Village with close proximity to Paulina Brown Line stop, multiple bus lines, and the Kennedy Expressway. Steps away from all of the great shops, restaurants and grocery options Roscoe Village has to offer, including:

- John's Place
- Turquoise Café
- Le Sud
- Volo Wine Bar
- Cuba 312
- Piazza Bella
- Starbucks
- Mariano's
- Jewel-Osco



CRAIG WOLF
847-989-9653
CRAIG@STRAUSSREALTY.COM

STRAUSS REALTY, LTD.
4220 W. MONTROSE AVENUE
CHICAGO, ILLINOIS 60641
PHONE: 773-736-3600

**GUT RENOVATED RETAIL SPACE FOR LEASE
IN THE HEART OF ROSCOE VILLAGE**



CRAIG WOLF
847-989-9653
CRAIG@STRAUSSREALTY.COM

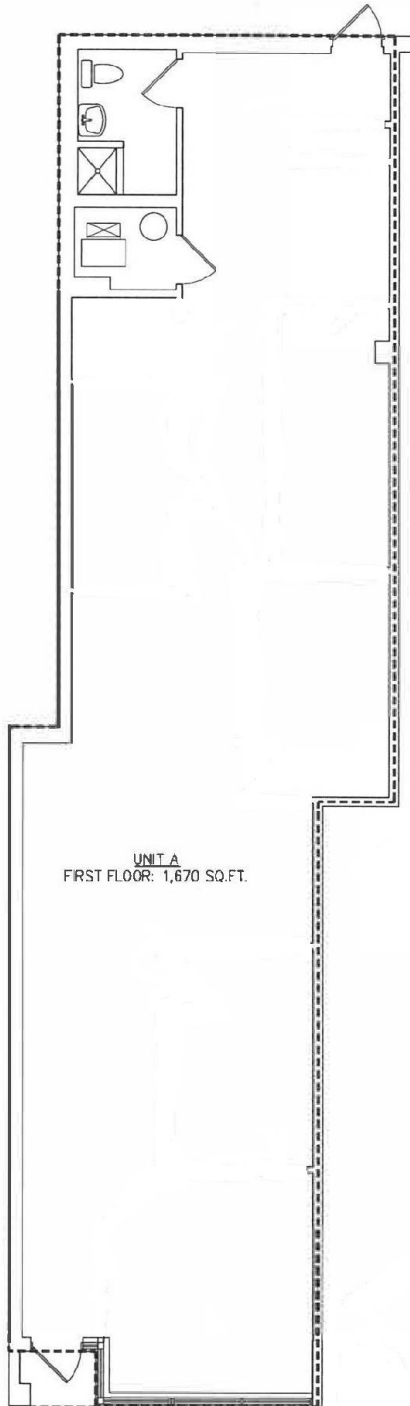
STRAUSS REALTY, LTD.
4220 W. MONTROSE AVENUE
CHICAGO, ILLINOIS 60641
PHONE: 773-736-3600

STRAUSS

REALTY, LTD.

2144 W. ROSCOE ST.
CHICAGO, IL 60618

Floor Plan



A First Floor Plan - Unit A
Scale: 1/8" = 1'-0"



CRAIG WOLF

847-989-9653

CRAIG@STRAUSSREALTY.COM

STRAUSS REALTY, LTD.
4220 W. MONTROSE AVENUE
CHICAGO, ILLINOIS 60641
PHONE: 773-736-3600