

STRAUSS

REALTY, LTD.

5130-5146 N. CICERO AVE.
CHICAGO, IL 60630

±29,925 SF VACANT LAND

ALSO AVAILABLE FOR PURCHASE WITH 5150 CICERO AVE. (AUTO REPAIR BUILDING)



Excellent opportunity to purchase large landsite with high visibility from Eden's Expressway! Ideal for a variety of development opportunities including residential, retail, office or medical use.

Asking Price: \$2,250,000
Size: 29,925 SF
Taxes (2020) \$23,690.07
PIN#: 13-09-404-047-0000
13-09-404-039-0000
13-09-404-028-0000
Zoning: B3-1
Alderman: Ward 39—
Samantha Nugent



ADAM SCHNEIDERMAN, SIOR
847-826-4467
ADAM@STRAUSSREALTY.COM

STRAUSS REALTY, LTD.
4220 W. MONTROSE AVENUE
CHICAGO, ILLINOIS 60641
PHONE: 773-736-3600

Location



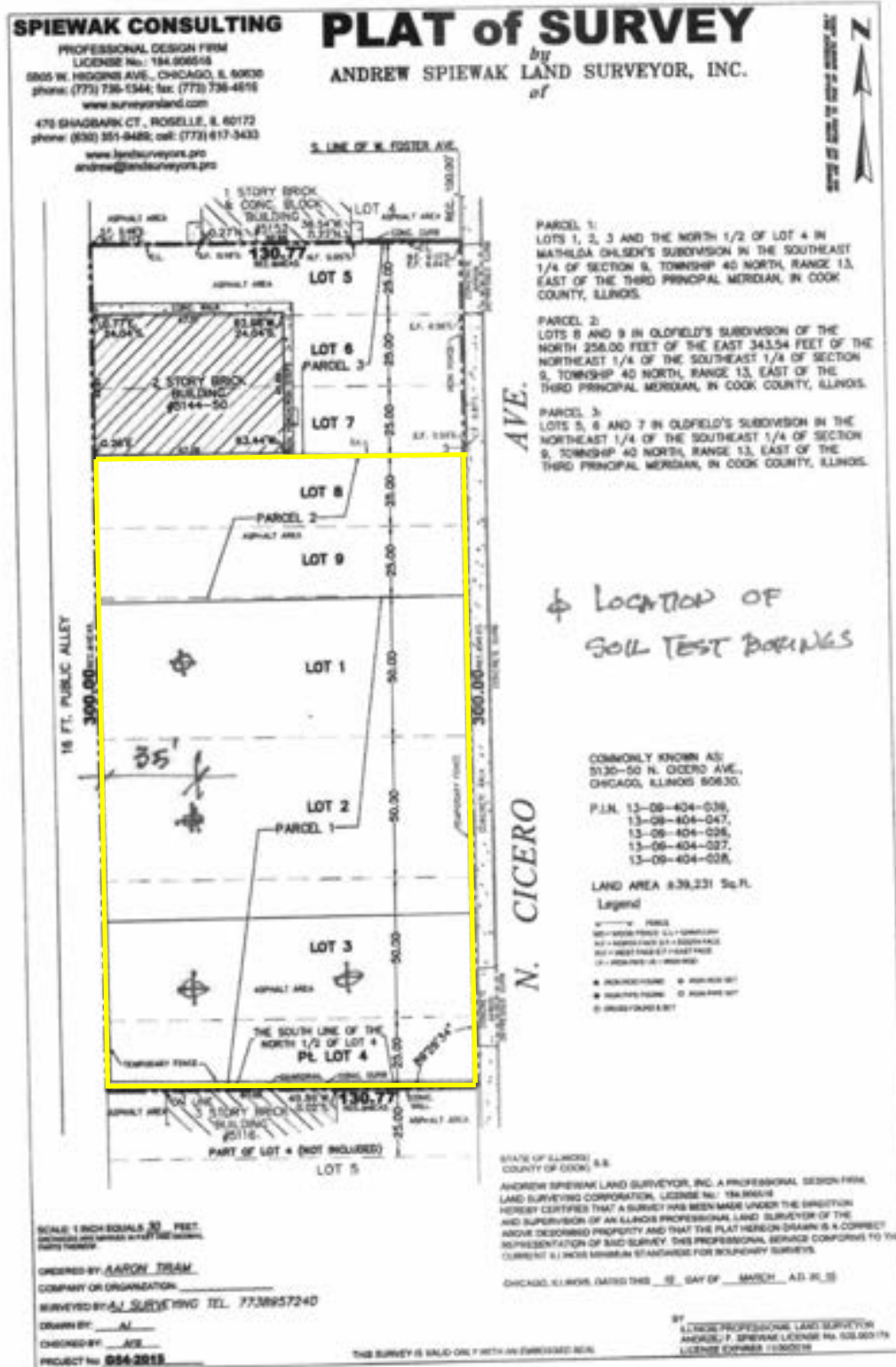
Close proximity to bus stops, I-94 Expressway, Seafood City Supermarket and many retail shops.

Traffic: Cicero Ave.—25,200 vpd
Eden's Expy.—119,000 vpd



ADAM SCHNEIDERMAN, SIOR
847-826-4467
ADAM@STRAUSSREALTY.COM

STRAUSS REALTY, LTD.
4220 W. MONTROSE AVENUE
CHICAGO, ILLINOIS 60641
PHONE: 773-736-3600



ADAM SCHNEIDERMAN, SIOR
847-826-4467
ADAM@STRAUSSREALTY.COM

STRAUSS REALTY, LTD.
4220 W. MONTROSE AVENUE
CHICAGO, ILLINOIS 60641
PHONE: 773-736-3600