

MIXED USE BUILDING FOR SALE IN DOWNTOWN PARK RIDGE



Two-story mixed-use property for sale in the heart of Park Ridge, IL. The property sits on a 5,916 sq. ft. lot containing three units; 2br/1bth Apartment, Storefront Salon on ground level, and a small Office/Retail space immediately next to the salon. The property features a Detached 3-car parking garage, as well as two additional spaces in-between the building and the garage. Rare opportunity to own great property in downtown Park Ridge!

Sale Price:	\$839,000	Total Units:	1—2BD/1BTH Apartment 1 Storefront 1 Office
Site Size:	5,916 SF Lot	Parking:	3 Spaces in Back, Plus Additional 3-Car Garage
Taxes (2020):	\$12,075		
Cap Rate:	6%		



MJ WEINBERGER
847-334-2587
MJ@STRAUSSREALTY.COM

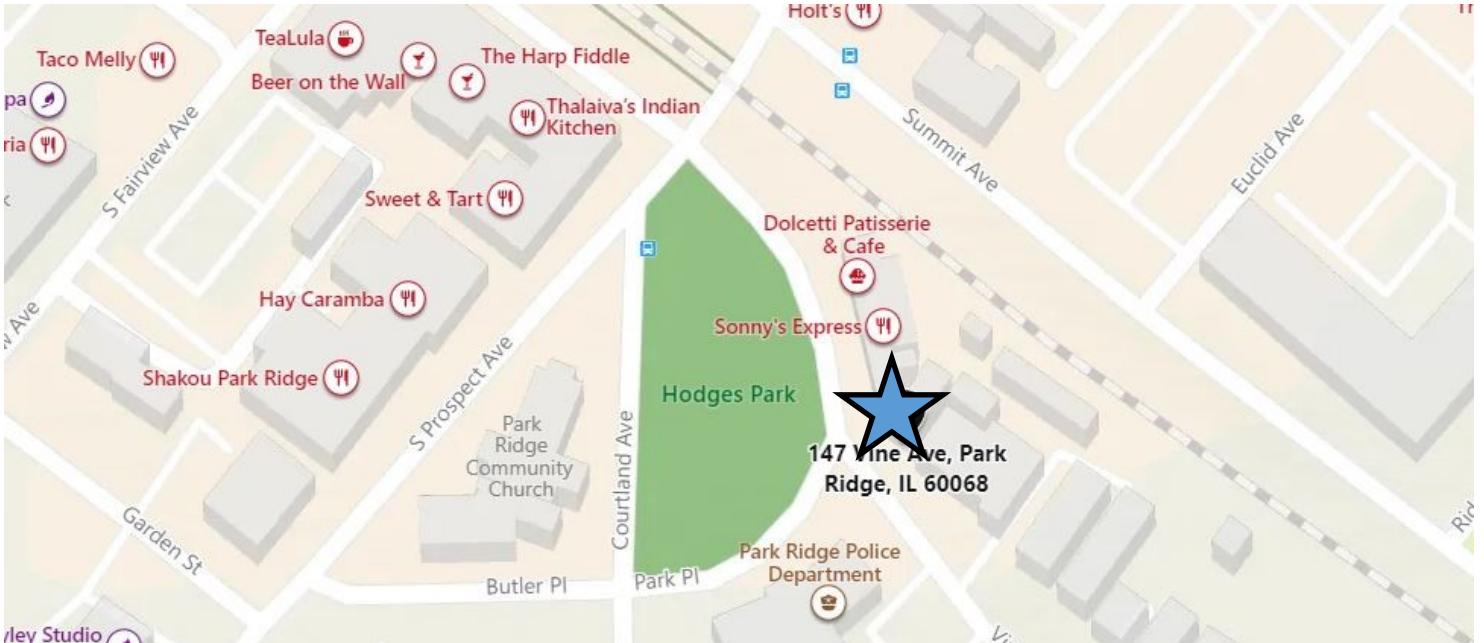
STRAUSS REALTY, LTD.
4220 W. MONTROSE AVE.
CHICAGO, ILLINOIS 60641
PHONE: 773-736-3600

STRAUSS

REALTY, LTD.

147 VINE AVE.
PARK RIDGE, IL 60068

Map



Nearby Businesses & Attractions

Sonny's Express

Dolcetti Patisserie & Café

Hodges Park

The Language Academy

High Society Jewelers

Park Ridge Community Church

Park Ridge Police Department

Park Ridge Environmental Health Office

Park Ridge Public Library

Shakou Park Ridge

Taco Melly

Hay Caramba Restaurant

Harp and Fiddle

Holt's

Sushi Express

Einstein Bros. Bagels

Starbucks

Pickwick Theater



MJ WEINBERGER

847-334-2587

MJ@STRAUSSREALTY.COM

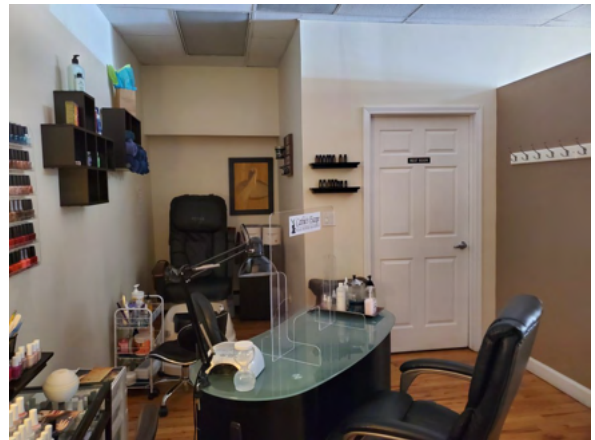
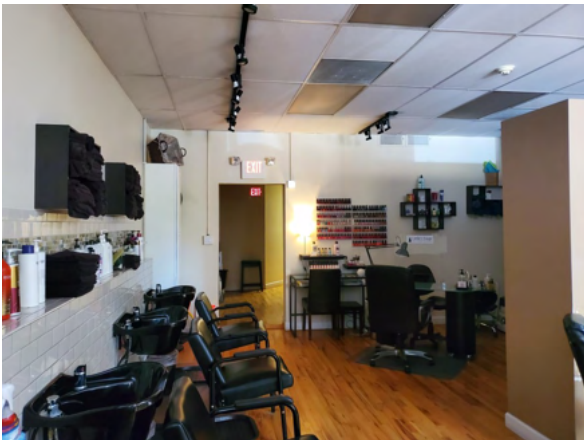
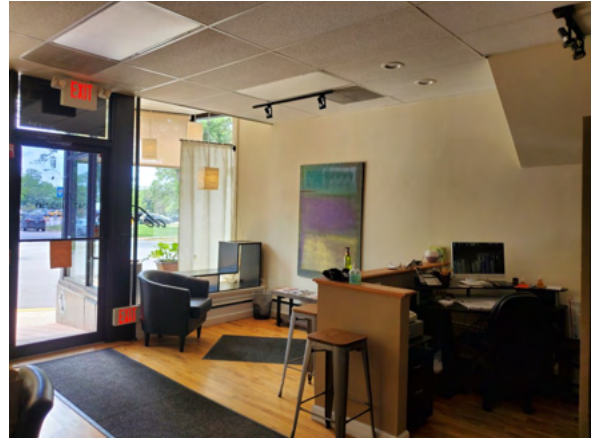
STRAUSS REALTY, LTD.

4220 W. MONTROSE AVE.

CHICAGO, ILLINOIS 60641

PHONE: 773-736-3600

Property Photos



MJ WEINBERGER
847-334-2587
MJ@STRAUSSREALTY.COM

STRAUSS REALTY, LTD.
4220 W. MONTROSE AVE.
CHICAGO, ILLINOIS 60641
PHONE: 773-736-3600