

STRAUSS

REALTY, LTD.

2846 N. MILWAUKEE AVE.

UNIT A.

CHICAGO, IL. 60618

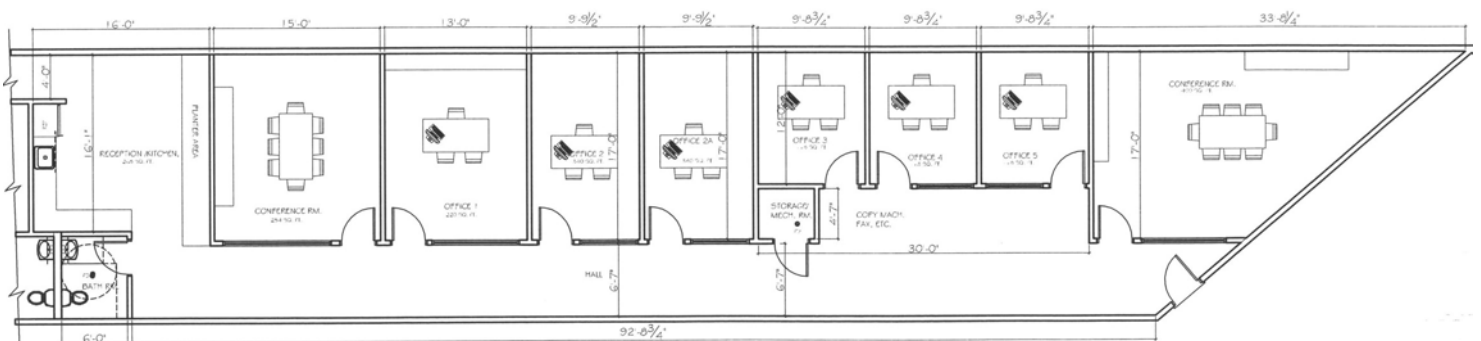
±3,290 SF OFFICE ON MILWAUKEE AVE. FOR LEASE



Beautifully built-out 3,290 SF office space for lease. Located on well-traveled Milwaukee Ave. in the continuously up and coming Logan Square neighborhood. Ideal space for attorneys, accountants and more!

Size: +/- 3,290 SF Office

Lease Price: \$4,500 per Month



REAR OFFICES FLOOR PLAN : NEW
SCALE: 1/8" = 1'-0"



MJ WEINBERGER

847-334-2587

MJ@STRAUSSREALTY.COM

STRAUSS REALTY, LTD.

4220 W. MONTROSE AVE.

CHICAGO, ILLINOIS 60641

PHONE: 773-736-3600

±3,290 SF OFFICE ON MILWAUKEE AVE.



MJ WEINBERGER
847-334-2587
MJ@STRAUSSREALTY.COM

STRAUSS REALTY, LTD.
4220 W. MONTROSE AVE.
CHICAGO, ILLINOIS 60641
PHONE: 773-736-3600

STRAUSS

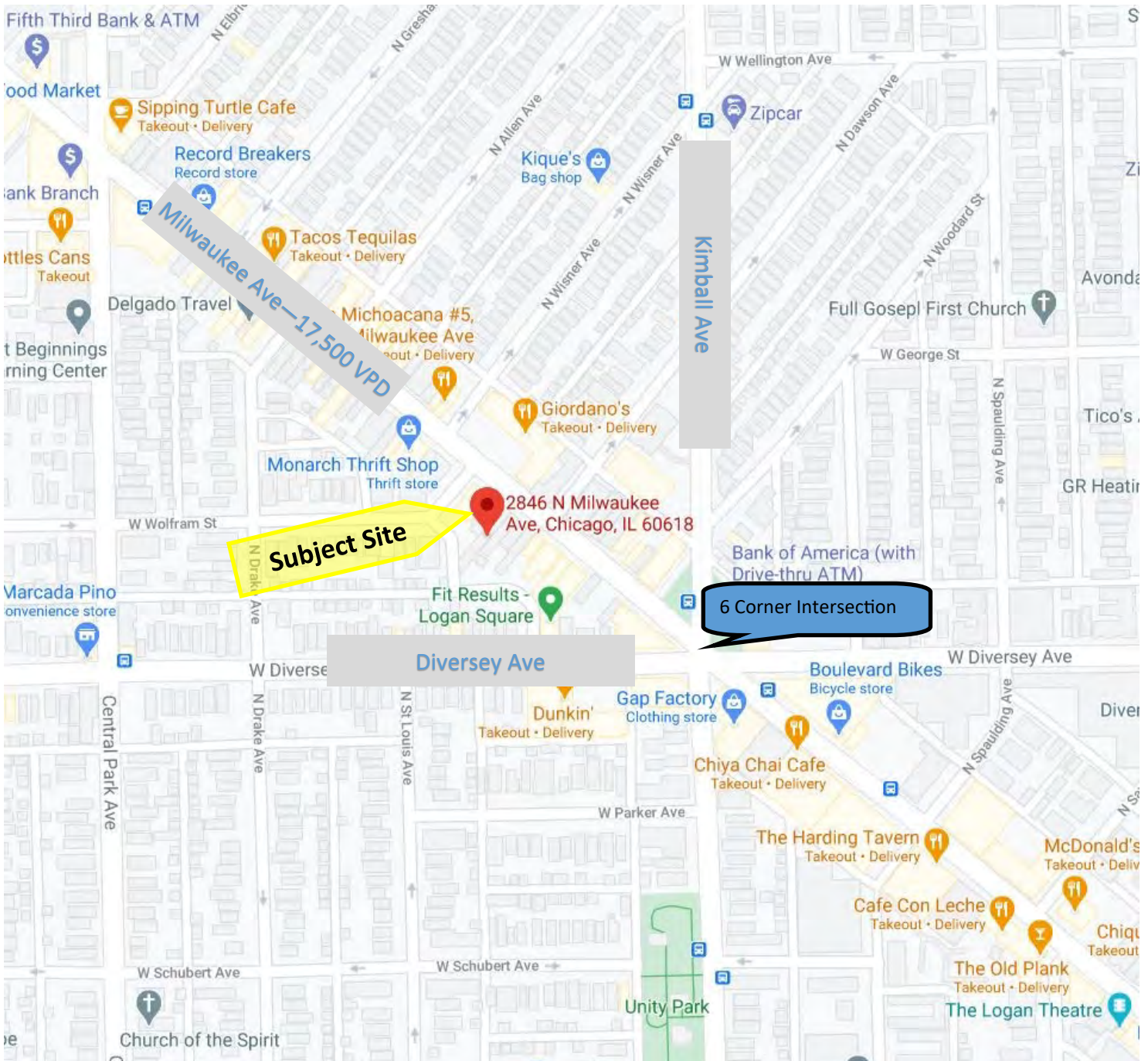
REALTY, LTD.

2846 N. MILWAUKEE AVE.

UNIT A.

CHICAGO, IL. 60618

±3,290 SF OFFICE ON MILWAUKEE AVE.



Public Transit:

0.4 Miles to Milwaukee
Metra Stop and walking
distance to CTA

Highway Access:

0.5 Miles to I-90



MJ WEINBERGER

847-334-2587

MJ@STRAUSSREALTY.COM

STRAUSS REALTY, LTD.

4220 W. MONTROSE AVE.

CHICAGO, ILLINOIS 60641

PHONE: 773-736-3600