

# STRAUSS

REALTY, LTD.

4652 N. SHERIDAN RD.  
CHICAGO, IL. 60640

## DIVISIBLE +/-4,000-8,000 SF RETAIL FOR LEASE FULLY BUILT-OUT GROCERY STORE IN UPTOWN

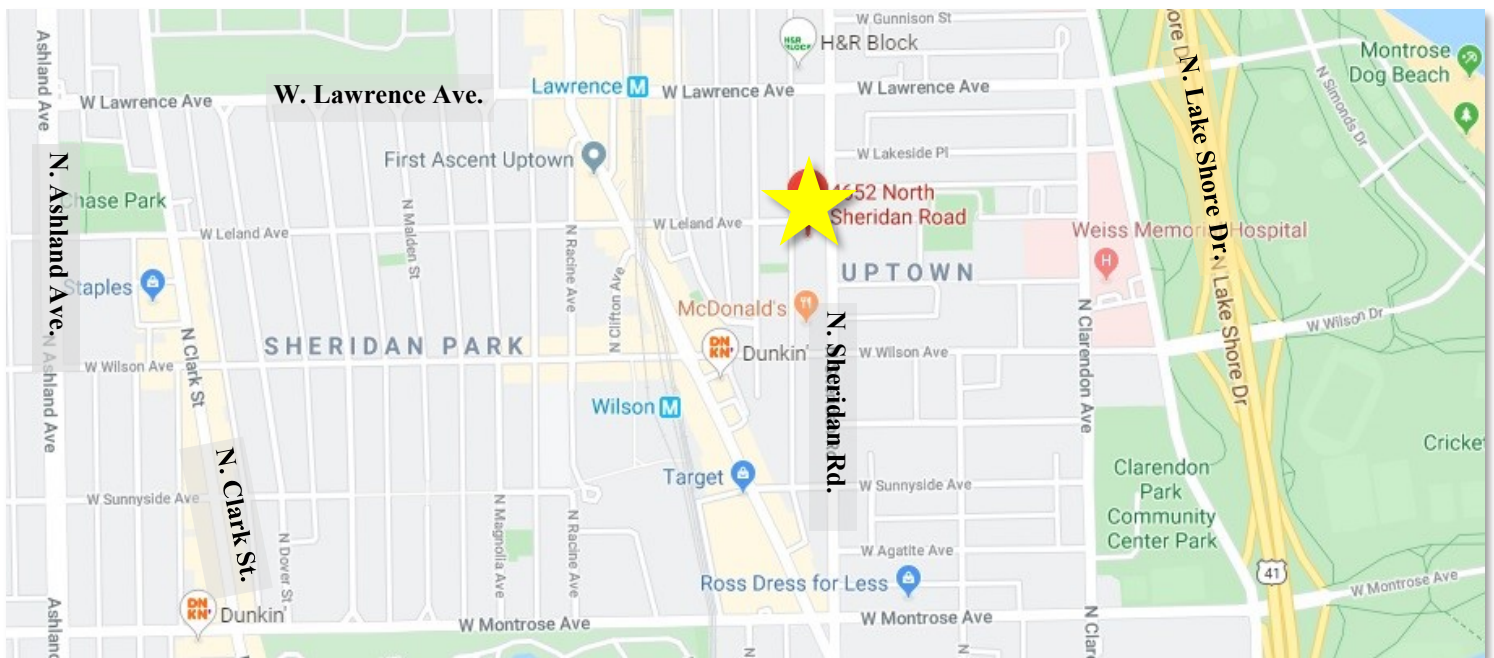
**\*ALL FIXTURES & EQUIPMENT INCLUDED\***



All uses considered!

**Space Size:** Divisible  
±4,000-8,000 SF  
**Lease Rate:** \$7,000 per Month  
\$10.50 MG  
**Lease Type:** Modified Gross  
**Zoning:** B3-3

The space is located in Chicago's thriving & dense Uptown neighborhood, steps to the Lake. Located near Weiss Memorial hospital and Chicago Lakeshore Hospital. Area retailers include CVS, Walgreens and many more.



**MJ WEINBERGER**

847-334-2587

MJ@STRAUSSREALTY.COM

**STRAUSS REALTY, LTD.**  
4220 W. MONTROSE AVENUE  
CHICAGO, ILLINOIS 60641  
PHONE: 773-736-3600

This flyer was produced using data from private and government sources deemed reliable. The information herein is provided without representation.

# STRAUSS

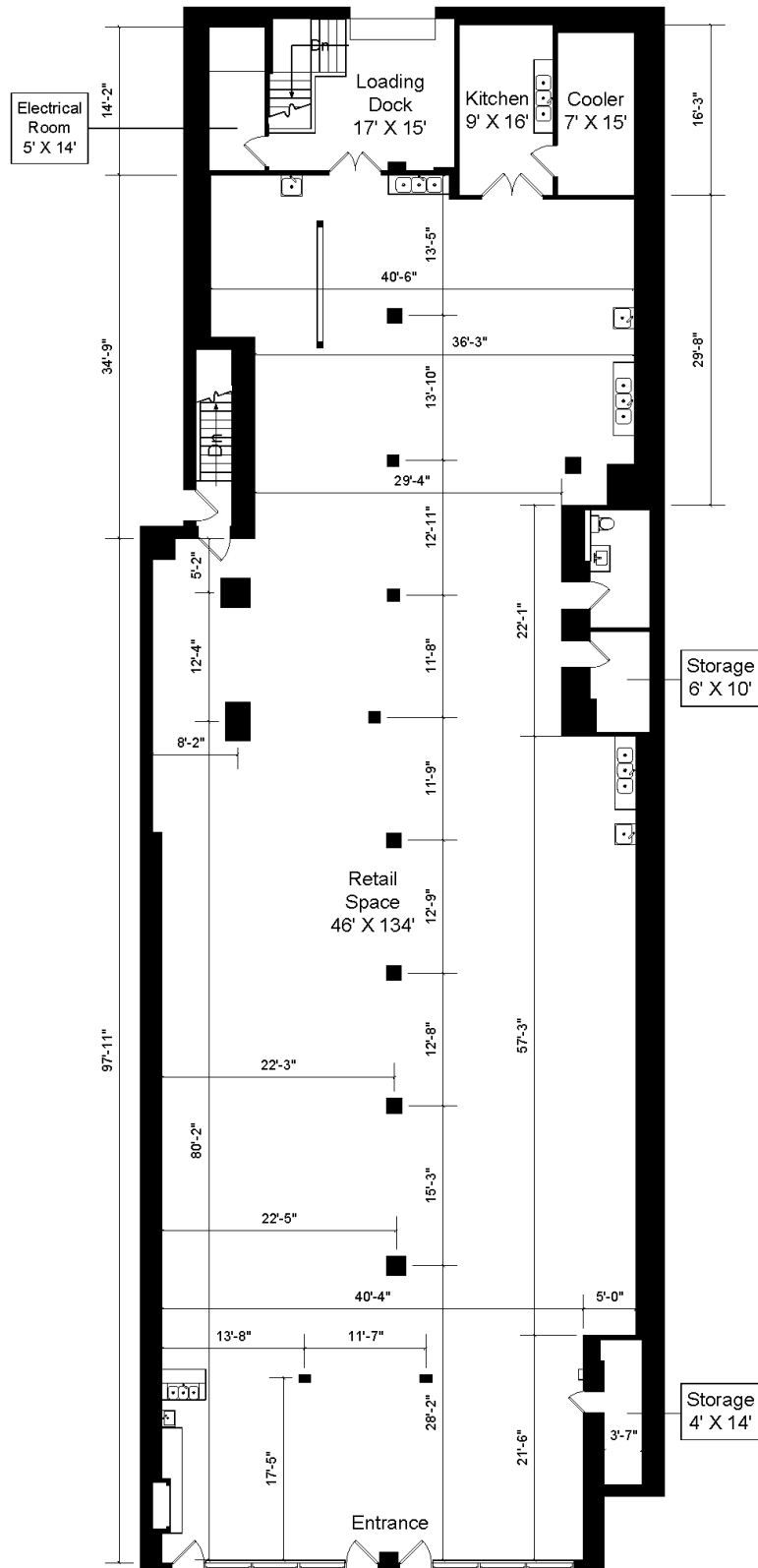
REALTY, LTD.

4652 N. SHERIDAN RD.  
CHICAGO, IL. 60640

## FLOOR PLAN

4650-52 NORTH SHERIDAN ROAD

Copyright © 2021. www.bestfloorplans.com - Floorplans are approximate and for marketing purposes only



MJ WEINBERGER

847-334-2587

MJ@STRAUSSREALTY.COM

STRAUSS REALTY, LTD.  
4220 W. MONTROSE AVENUE  
CHICAGO, ILLINOIS 60641  
PHONE: 773-736-3600

This flyer was produced using data from private and government sources deemed reliable. The information herein is provided without representation.