

2,850 SF COMMERCIAL SPACE FOR LEASE



GROUND FLOOR COMMERCIAL SPACE AT ICONIC 120-UNIT RESIDENTIAL BUILDING, SHERIDAN PLAZA. FORMER MEDICAL USE SPACE, AVAILABLE IMMEDIATELY.

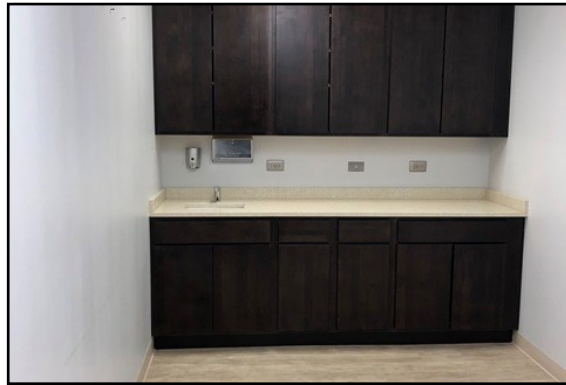
- Space Available:** 2,850 SF Located on ground floor
- Asking Rent:** \$4,150 per month gross
- Operating Expenses:** \$120 per month
- Parking:** \$150 per space per month
- Zoning:** B3-5
- Transportation:** Located 3 blocks from CTA stop at Wilson.



CRAIG WOLF
847-989-9653
CRAIG@STRAUSSREALTY.COM

STRAUSS REALTY, LTD.
4220 W. MONTROSE AVENUE
CHICAGO, ILLINOIS 60641
PHONE: 773-736-3600

2,850 SF COMMERCIAL SPACE FOR LEASE



GROUND FLOOR COMMERCIAL SPACE AT ICONIC BUILDING, SHERIDAN PLAZA. FORMER MEDICAL USE SPACE, AVAILABLE IMMEDIATELY.

- Space Available:** 2,850 SF Located on ground floor
- Asking Rent:** \$4,150 per month gross
- Operating Expenses:** \$120 per month
- Parking:** \$150 per space per month
- Zoning:** B3-5
- Transportation:** Located 3 blocks from CTA stop at Wilson.



CRAIG WOLF
847-989-9653
CRAIG@STRAUSSREALTY.COM

STRAUSS REALTY, LTD.
4220 W. MONTROSE AVENUE
CHICAGO, ILLINOIS 60641
PHONE: 773-736-3600

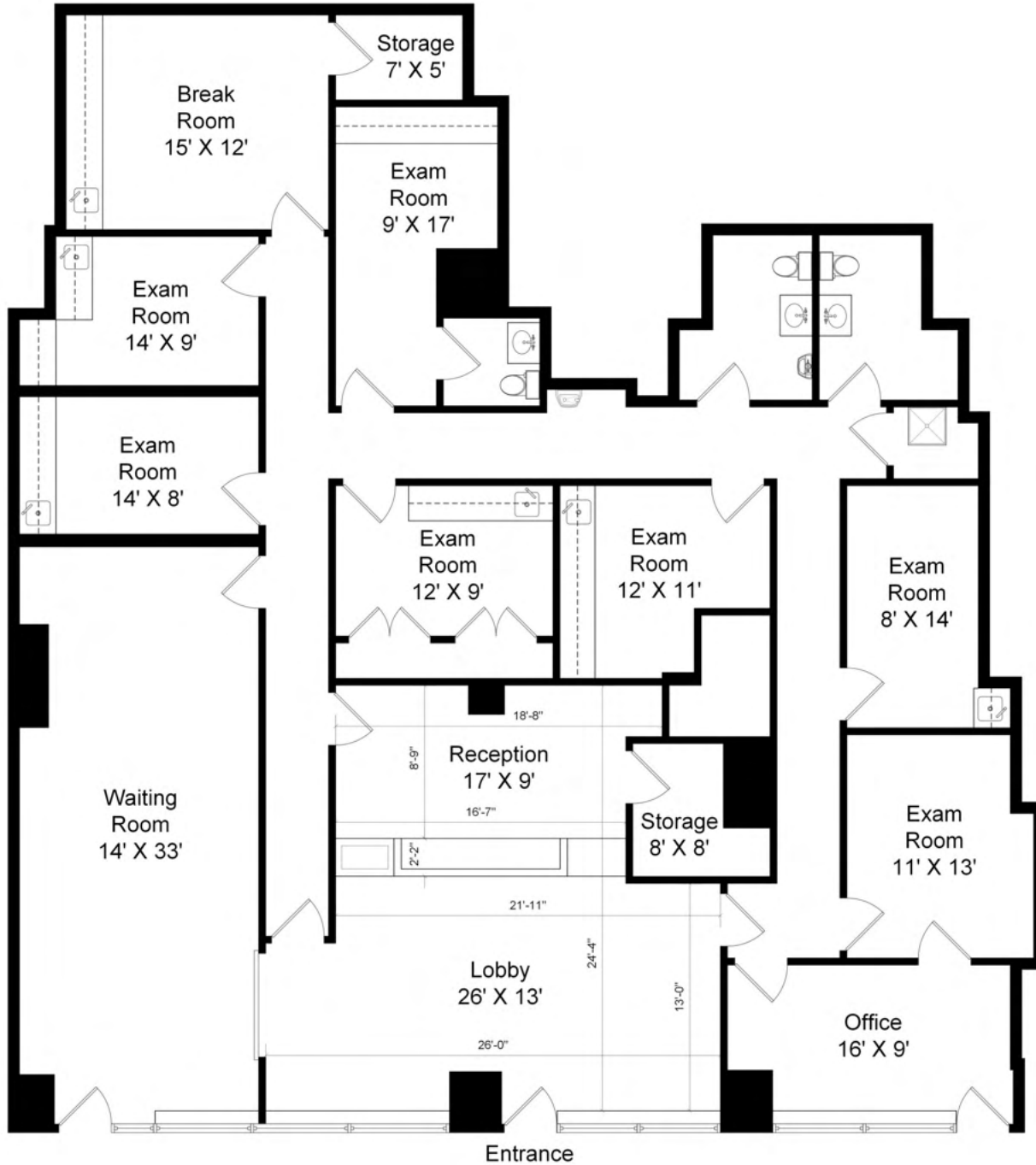
Nearby tenants include: Target, Weiss Memorial Hospital, Aldi, McDonald's, Sonic, Dunkin' Donuts, Ace Hardware, Harry S. Truman College



CRAIG WOLF
847-989-9653
CRAIG@STRAUSSREALTY.COM

STRAUSS REALTY, LTD.
4220 W. MONTROSE AVENUE
CHICAGO, ILLINOIS 60641
PHONE: 773-736-3600

Floorplan



CRAIG WOLF
847-989-9653
CRAIG@STRAUSSREALTY.COM

STRAUSS REALTY, LTD.
4220 W. MONTROSE AVENUE
CHICAGO, ILLINOIS 60641
PHONE: 773-736-3600