



LEASED

Property Description

Bow Truss Industrial Warehouse building with offices, parking, interior truck level dock, clear span, heavy power etc... Excellent access to 90/94 and great street visibility with wide open floor plan. Ideal for a variety of uses, including manufacturing, distribution, Automotive, assembly, most any commercial/industrial use. This building is extremely clean and well maintained, with great access to the city and suburbs. DID possible.

Property Details

LEASE PRICE: **\$10**

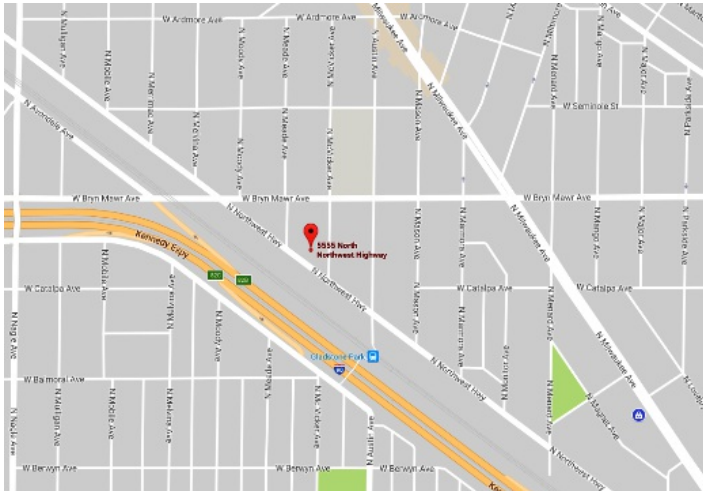
MINIMUM RENTABLE SQ FT: 4,500

MAXIMUM RENTABLE SQ FT: 11,500

LEASE TYPE: Modified Gross

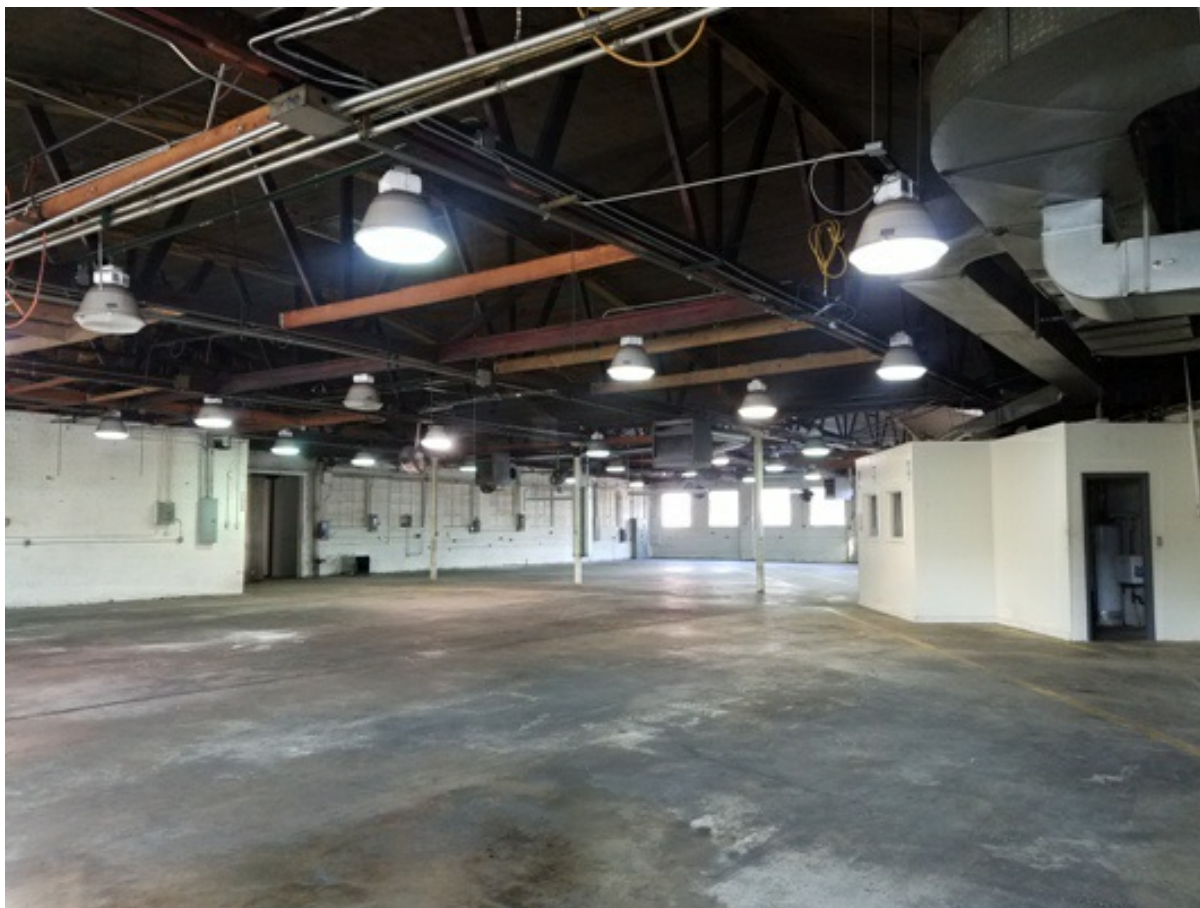
ZONING: M1-1

BUILDING SQ FT: 11,500



Dale Strauss 773-736-3600 dale@straussrealty.com

Howard Gould 773-736-3600 mobile: 847-833-3355 Gould@straussrealty.com



Dale Strauss 773-736-3600 dale@straussrealty.com

Howard Gould 773-736-3600 mobile: 847-833-3355 Gould@straussrealty.com



COMMERCIAL, INDUSTRIAL

5545 N. NORTHWEST HWY.

CHICAGO, ILLINOIS 60630



Dale Strauss 773-736-3600 dale@straussrealty.com

Howard Gould 773-736-3600 mobile: 847-833-3355 Gould@straussrealty.com



COMMERCIAL, INDUSTRIAL

5545 N. NORTHWEST HWY.

CHICAGO, ILLINOIS 60630



Dale Strauss 773-736-3600 dale@straussrealty.com

Howard Gould 773-736-3600 mobile: 847-833-3355 Gould@straussrealty.com