



### LEASED

#### Property Description

##### **Status Update: LEASED! June 2022**

3,800 SF High cube warehouse space with .5 acres of land. 15' ceiling height to bottom of beams and 18' ceiling height to roof. Fully sprinklered, dry. Private parking in front of the building along with free and unrestricted parking on Wolcott Ave. Asking rental rate of \$10,000 per month, modified gross. Perfect for any Industrial, Construction, Landscaping or General Contractor use!

#### Features:

- Overhead door 12' high x 18' wide
- Newly installed central heat and air along ...[more information](#)

#### Property Details

MINIMUM RENTABLE SQ FT: 3,800

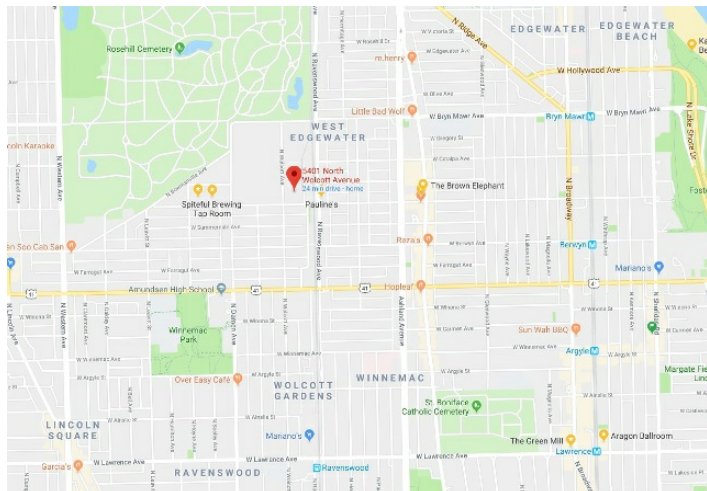
MAXIMUM RENTABLE SQ FT: 3,800

LEASE TYPE: Modified Gross

ZONING: M1-2

BUILDING SQ FT: 3,800

GROSS MONTHLY RENT: \$10,000





COMMERCIAL, INDUSTRIAL, OFFICE, LAND, OTHER

**5401 N. WOLCOTT AVE. UNIT E**

CHICAGO, ILLINOIS 60640



Craig Wolf 773-736-3600   Craig@straussrealty.com



COMMERCIAL, INDUSTRIAL, OFFICE, LAND, OTHER

**5401 N. WOLCOTT AVE. UNIT E**

CHICAGO, ILLINOIS 60640



Craig Wolf 773-736-3600   Craig@straussrealty.com





COMMERCIAL, INDUSTRIAL, OFFICE, LAND, OTHER

**5401 N. WOLCOTT AVE. UNIT E**

CHICAGO, ILLINOIS 60640



Craig Wolf 773-736-3600 Craig@straussrealty.com



COMMERCIAL, INDUSTRIAL, OFFICE, LAND, OTHER

**5401 N. WOLCOTT AVE. UNIT E**

CHICAGO, ILLINOIS 60640



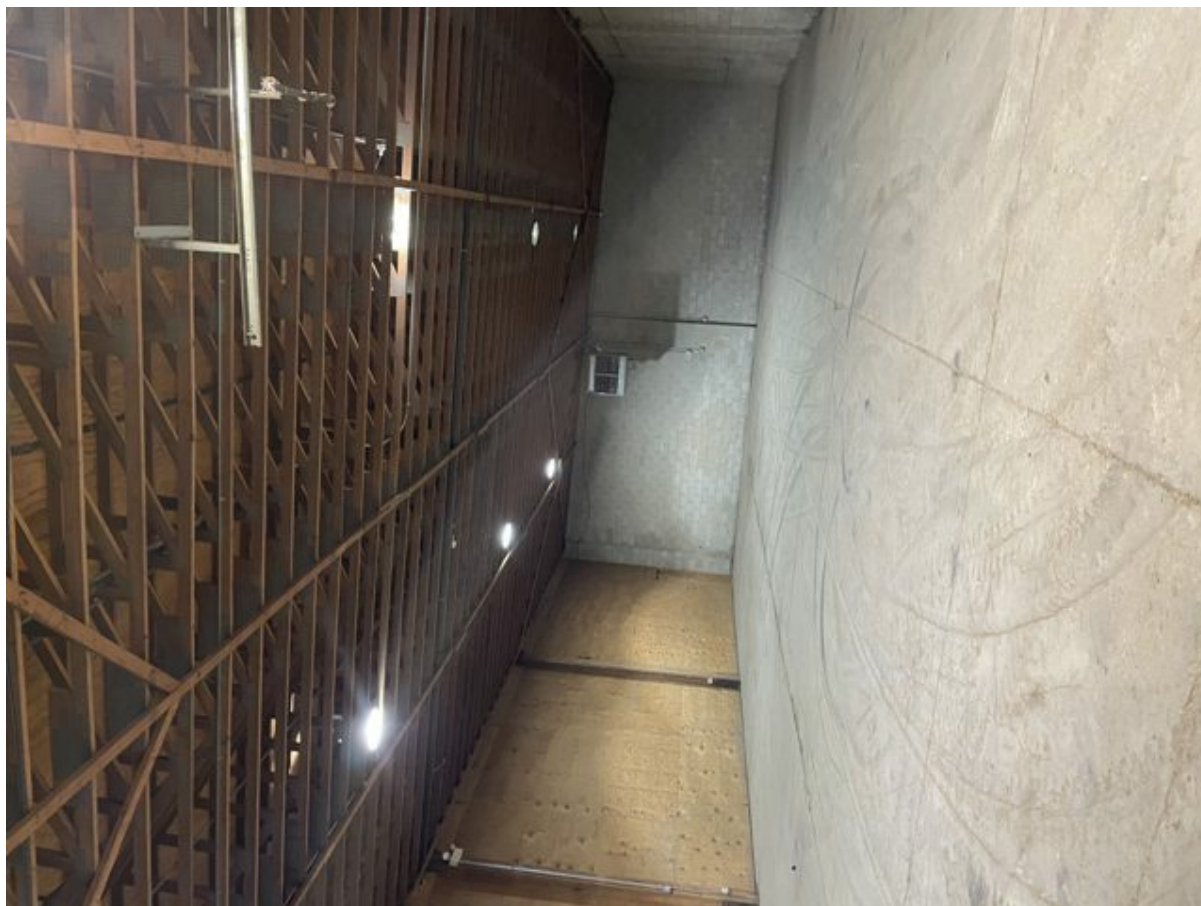
Craig Wolf 773-736-3600   Craig@straussrealty.com



COMMERCIAL, INDUSTRIAL, OFFICE, LAND, OTHER

**5401 N. WOLCOTT AVE. UNIT E**

CHICAGO, ILLINOIS 60640



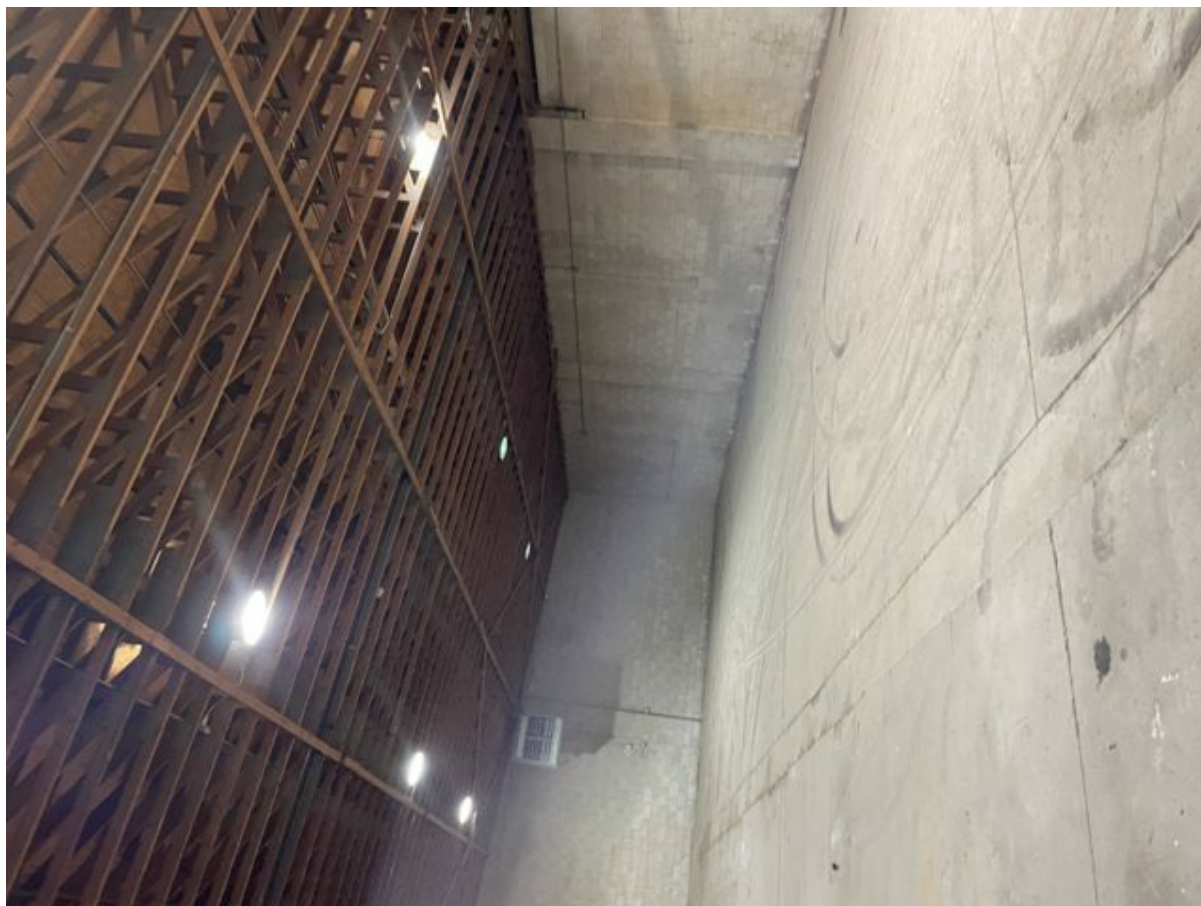
Craig Wolf 773-736-3600   Craig@straussrealty.com



COMMERCIAL, INDUSTRIAL, OFFICE, LAND, OTHER

**5401 N. WOLCOTT AVE. UNIT E**

CHICAGO, ILLINOIS 60640



Craig Wolf 773-736-3600   Craig@straussrealty.com