

LEASED

Property Description

Status Update: LEASED! August 2022

Fully renovated ground floor space with one private office and abundant parking in the rear. Located at Elston & Lawrence intersection, just west of I-94. Access to double-wide doors allows for easy loading into space.

Property Details

MINIMUM RENTABLE SQ FT: 1,265

MAXIMUM RENTABLE SQ FT: 1,265

LEASE TYPE: Gross

ZONING: B3-3

GROSS MONTHLY RENT: \$1,400

DETAILS:

LOADING: DOUBLE WIDE DOORS

ZONING: B3-3

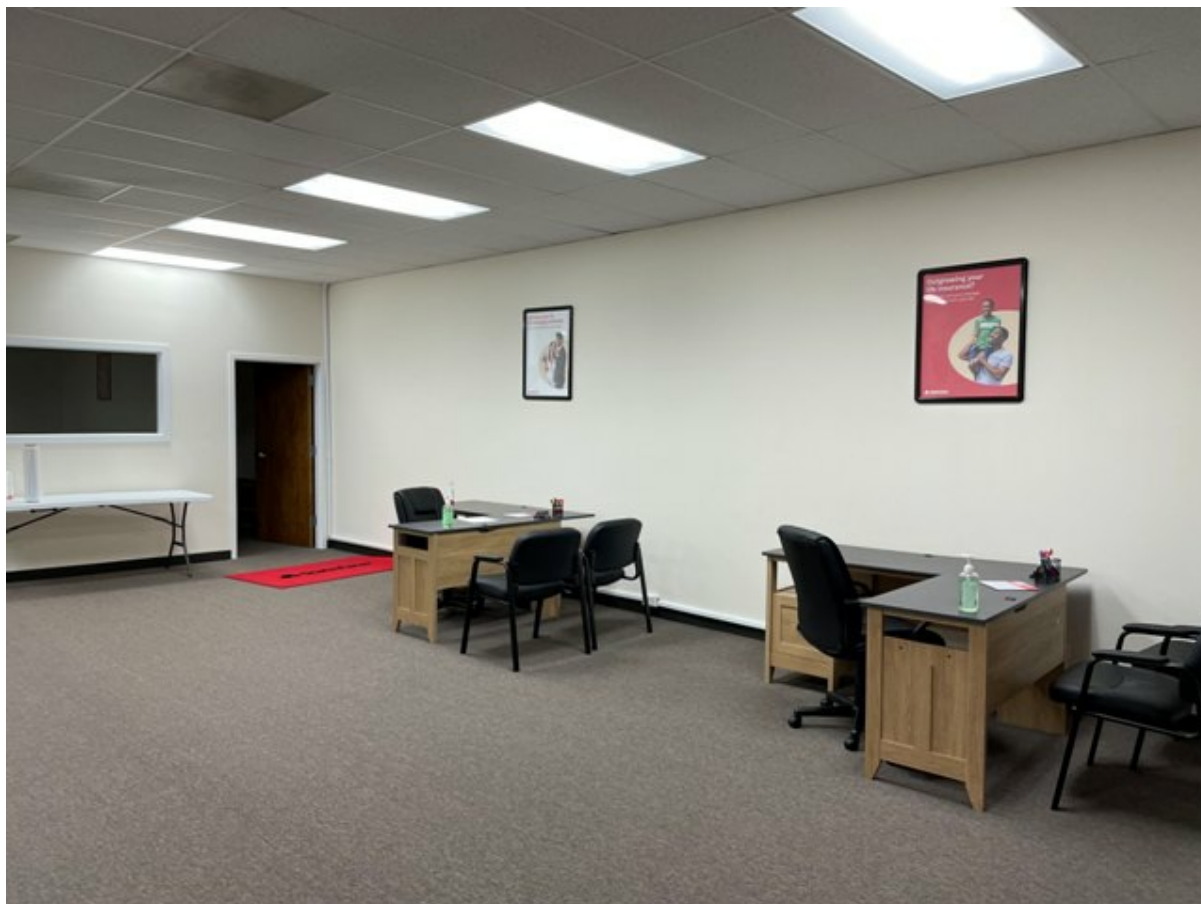
PARKING: PRIVATE LOT, ADJACENT TO PROPERTY



RETAIL, OFFICE

4415 W. LAWRENCE AVE.

CHICAGO, ILLINOIS 60630



Craig Wolf 773-736-3600 Craig@straussrealty.com



Craig Wolf 773-736-3600 Craig@straussrealty.com