



LEASED

Property Description

Status Update: LEASED! November 2021

Ground floor office/retail space on the corner of Elston & Christiana. 1,600 SF of open floor plan. Additional storage in the basement. Great visibility along busy Elston Ave. Nearby major intersection at Addison Ave.

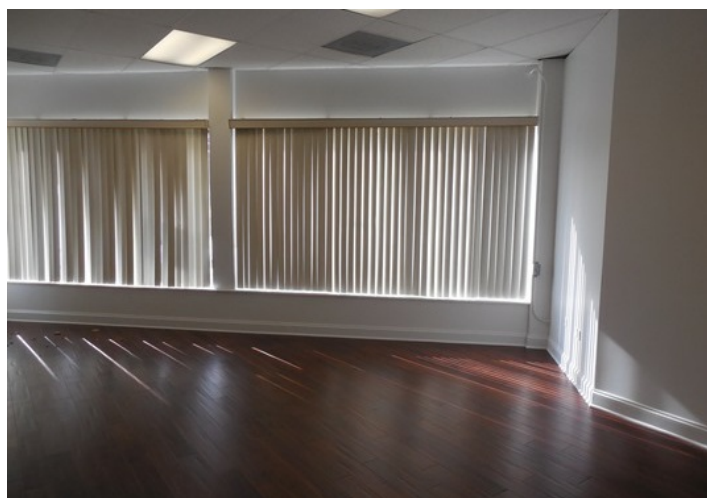
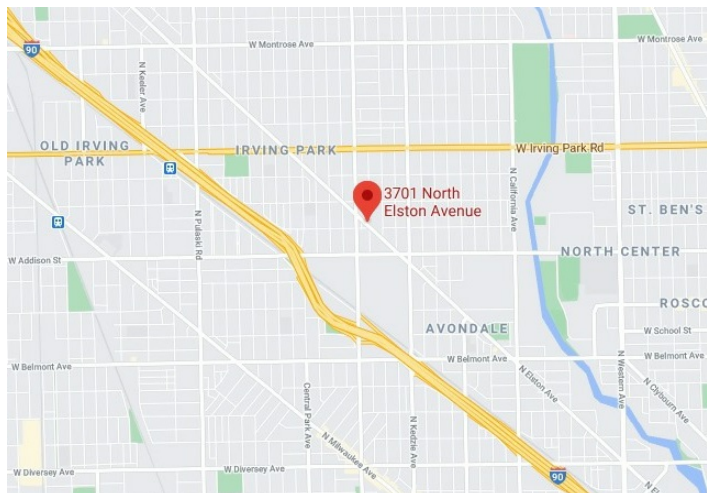
Property Details

LEASE TYPE: Gross

ZONING: B3-1

BUILDING SQ FT: 1,600

GROSS MONTHLY RENT: \$1,800





RETAIL, OFFICE

3701 N. ELSTON AVE.

CHICAGO, ILLINOIS 60618



Craig Wolf 773-736-3600 Craig@straussrealty.com



RETAIL, OFFICE

3701 N. ELSTON AVE.

CHICAGO, ILLINOIS 60618



Craig Wolf 773-736-3600 Craig@straussrealty.com



RETAIL, OFFICE

3701 N. ELSTON AVE.

CHICAGO, ILLINOIS 60618



Craig Wolf 773-736-3600 Craig@straussrealty.com



RETAIL, OFFICE

3701 N. ELSTON AVE.

CHICAGO, ILLINOIS 60618



Craig Wolf 773-736-3600 Craig@straussrealty.com