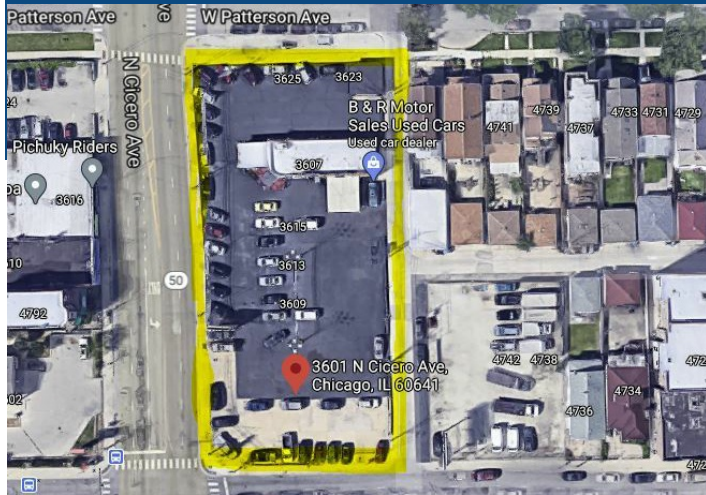


STRAUSS

REALTY, LTD.

COMMERCIAL, DEVELOPMENT, INVESTMENT, INDUSTRIAL, MULTI-FAMILY, MIXED USE, BUSINESS W/REAL ESTATE, RETAIL, OFFICE, LAND, OTHER



FOR SALE

Property Description

Land for Sale/Development Opportunity in Chicago! Rare opportunity to acquire a city block at the highly visible stoplight corner of Cicero and Addison. Ideal site for retail, medical and various commercial concepts. Ready for your redevelopment ideas.

- Located near busy Six Corners Marketplace
- Parcel is $\pm 31,535$ SF of Land
- 265' of Frontage along Cicero

Property Details

SALE PRICE: **\$2,900,000**

PROPERTY TAX: \$39,289

ZONING: B3-1

BUILDING SQ FT: 31,535

SITE SQUARE FEET: 31,535

SITE DIMENSIONS: 265x119

DETAILS:

265' x 119' (10 City Lots)
 $\pm 31,535$ SF of Land

Public Transit: 0.6 Miles to Grayland Metra Stop and walking distance to CTA

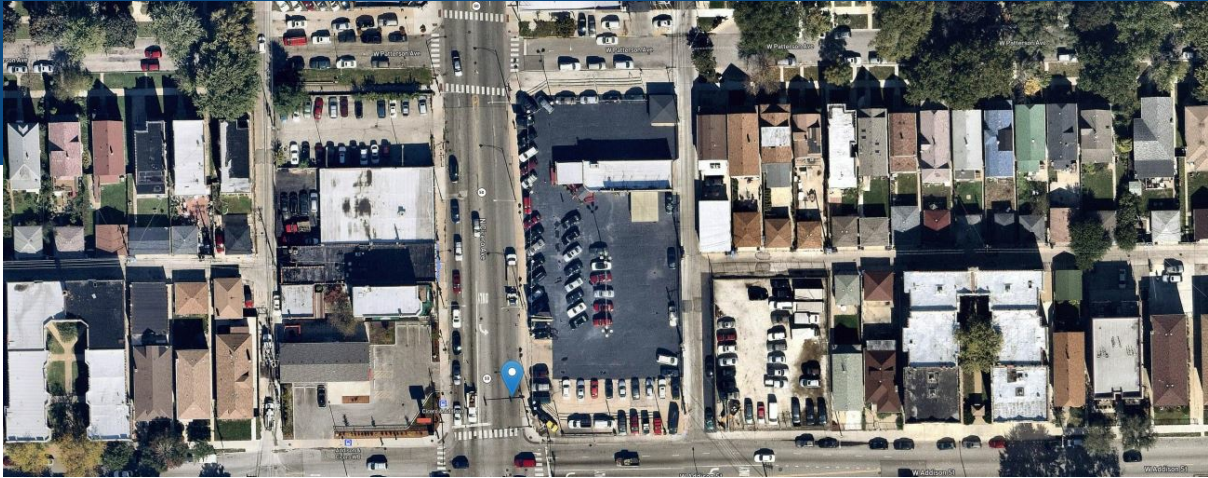
Highway Access: 0.5 Miles to I-90 and I-94

MJ Weinberger 773-736-3600 mobile: 847-334-2587 MJ@straussrealty.com
Howard Gould 773-736-3600 mobile: 847-833-3355 Gould@straussrealty.com

STRAUSS

REALTY, LTD.

COMMERCIAL, DEVELOPMENT, INVESTMENT, INDUSTRIAL, MULTI-FAMILY, MIXED USE, BUSINESS W/REAL ESTATE, RETAIL, OFFICE, LAND, OTHER



AVE.
60641



MJ Weinberger 773-736-3600 mobile: 847-334-2587 MJ@straussrealty.com
Howard Gould 773-736-3600 mobile: 847-833-3355 Gould@straussrealty.com