

LEASED

Property Description

Status Update: LEASED! December 2023

1,210 SF prime retail/office space in Lincoln Park. 22' Frontage with signage opportunity available with clear span layout and 14' ceilings. Separate bathroom and central air included. Ideal for any retail or office use.

Property Details

MINIMUM RENTABLE SQ FT: 1,210

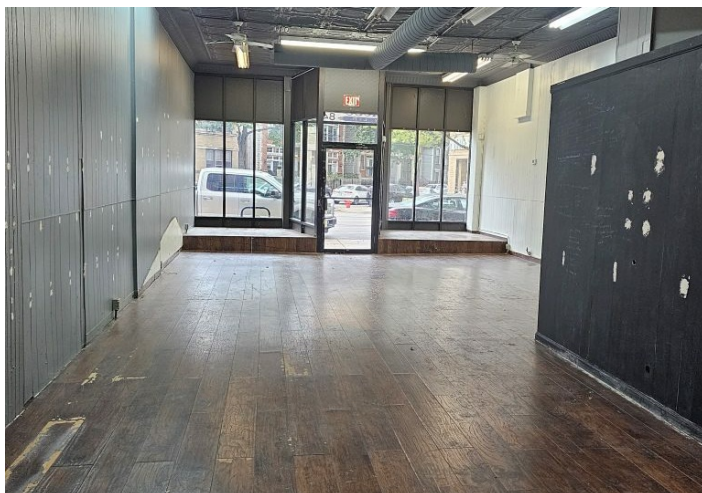
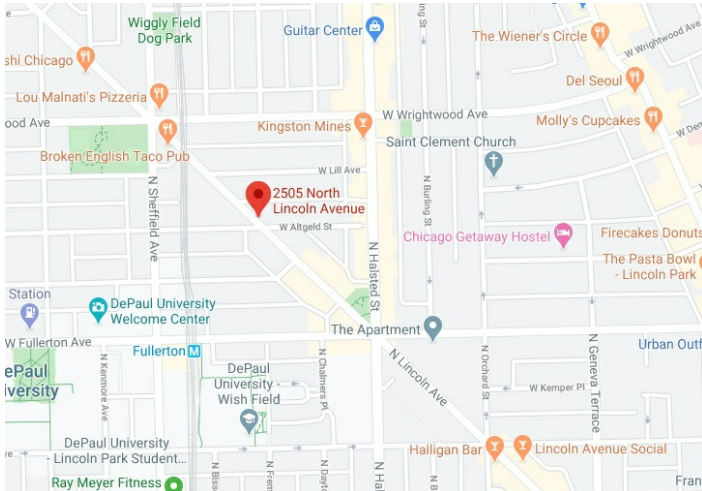
MAXIMUM RENTABLE SQ FT: 1,210

LEASE TYPE: Modified Gross

ZONING: B3-5

BUILDING SQ FT: 1,210

GROSS MONTHLY RENT: \$2,395







RETAIL, OFFICE

2505 N. LINCOLN AVE.

CHICAGO, ILLINOIS 60614

MJ Weinberger 773-736-3600 mobile: 847-334-2587 MJ@straussrealty.com