



LEASED

Property Description

Storefront for lease on the corner of W. Irving Park Rd & N. Hamilton Ave - just four blocks west of N. Damen Ave. Office use or retail use most likely. Bathroom and kitchen in the rear. Great visibility along high traffic count street. Open and flexible floor plan.

Property Details

LEASE PRICE: **\$18**

MINIMUM RENTABLE SQ FT: 1,100

MAXIMUM RENTABLE SQ FT: 1,100

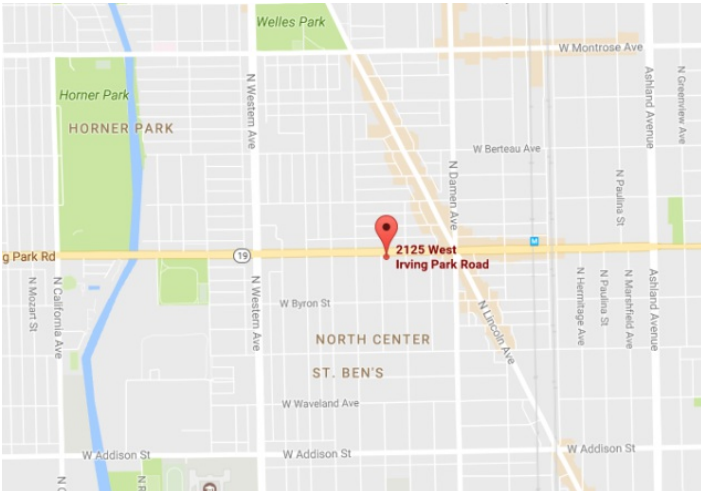
LEASE TYPE: Gross

ZONING: B1-1

BUILDING SQ FT: 1,100

SITE SQUARE FEET: 1,100

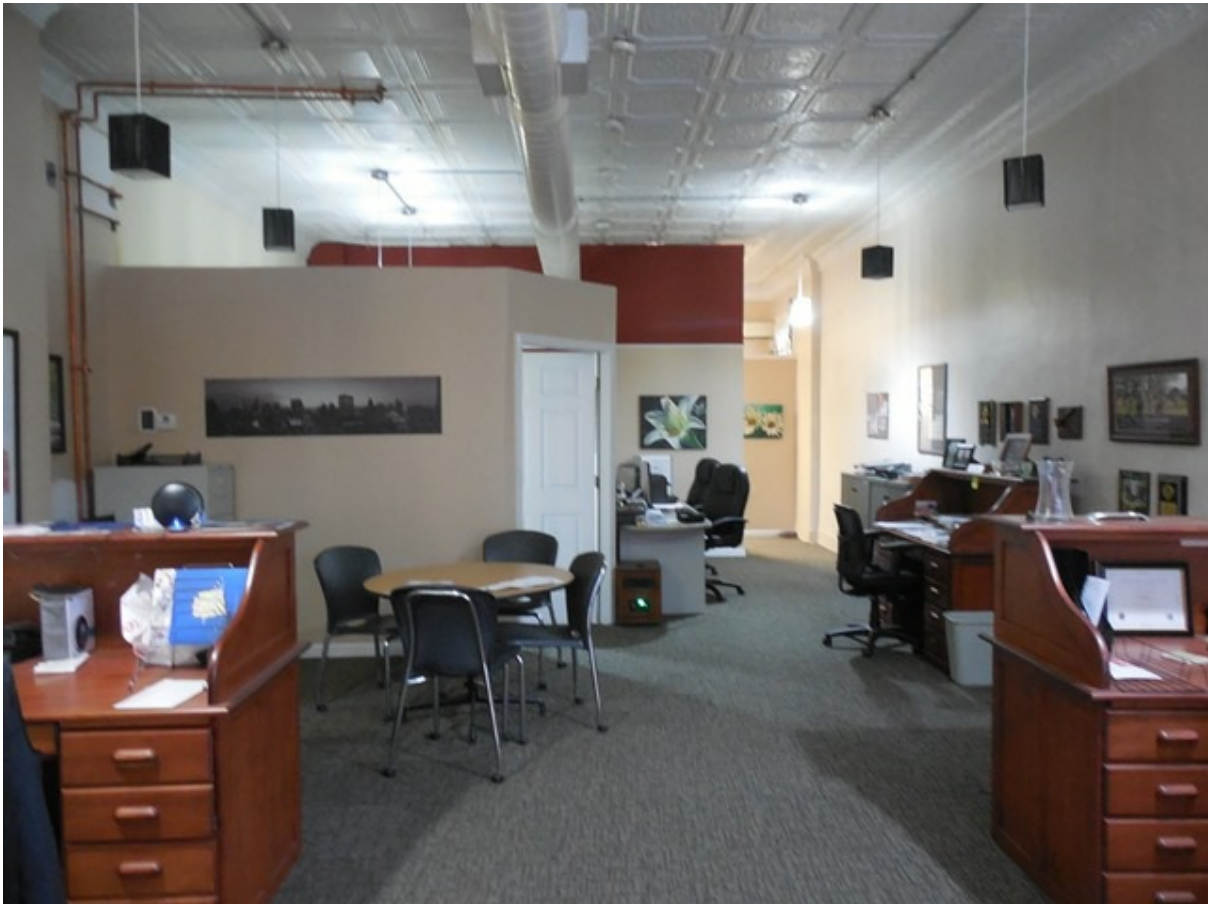
GROSS MONTHLY RENT: \$1,650





Craig Wolf 773-736-3600 mobile: 847-989-9653 Craig@straussrealty.com





Craig Wolf 773-736-3600 mobile: 847-989-9653 Craig@straussrealty.com



Craig Wolf 773-736-3600 mobile: 847-989-9653 Craig@straussrealty.com