



LEASED

Property Description

Freshly rehabbed storefront in vintage building. 806 SF finished basement and 624 SF storefront/office with high ceilings and 1 bathroom. Street parking only. Great visibility on busy Belmont Ave.

Property Details

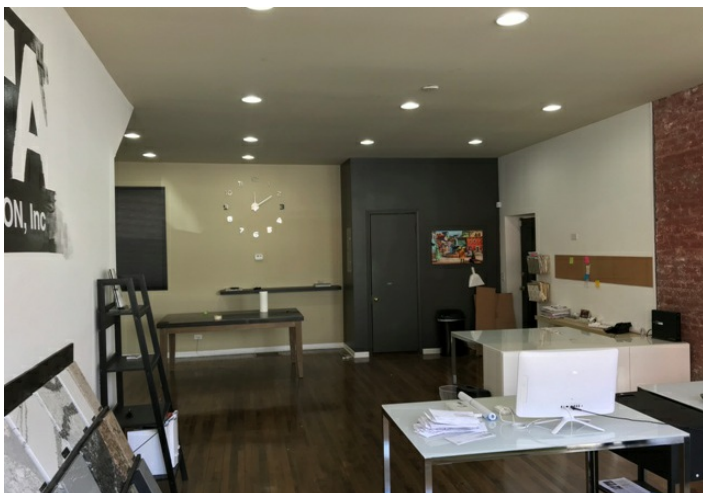
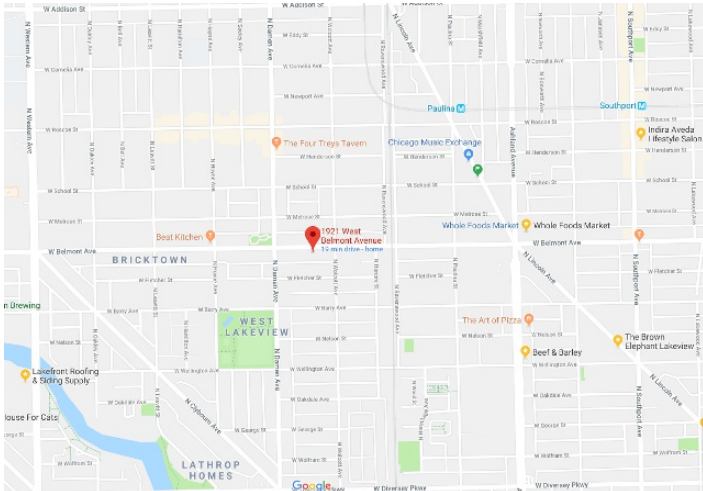
LEASE PRICE: **\$12**

LEASE TYPE: Modified Gross

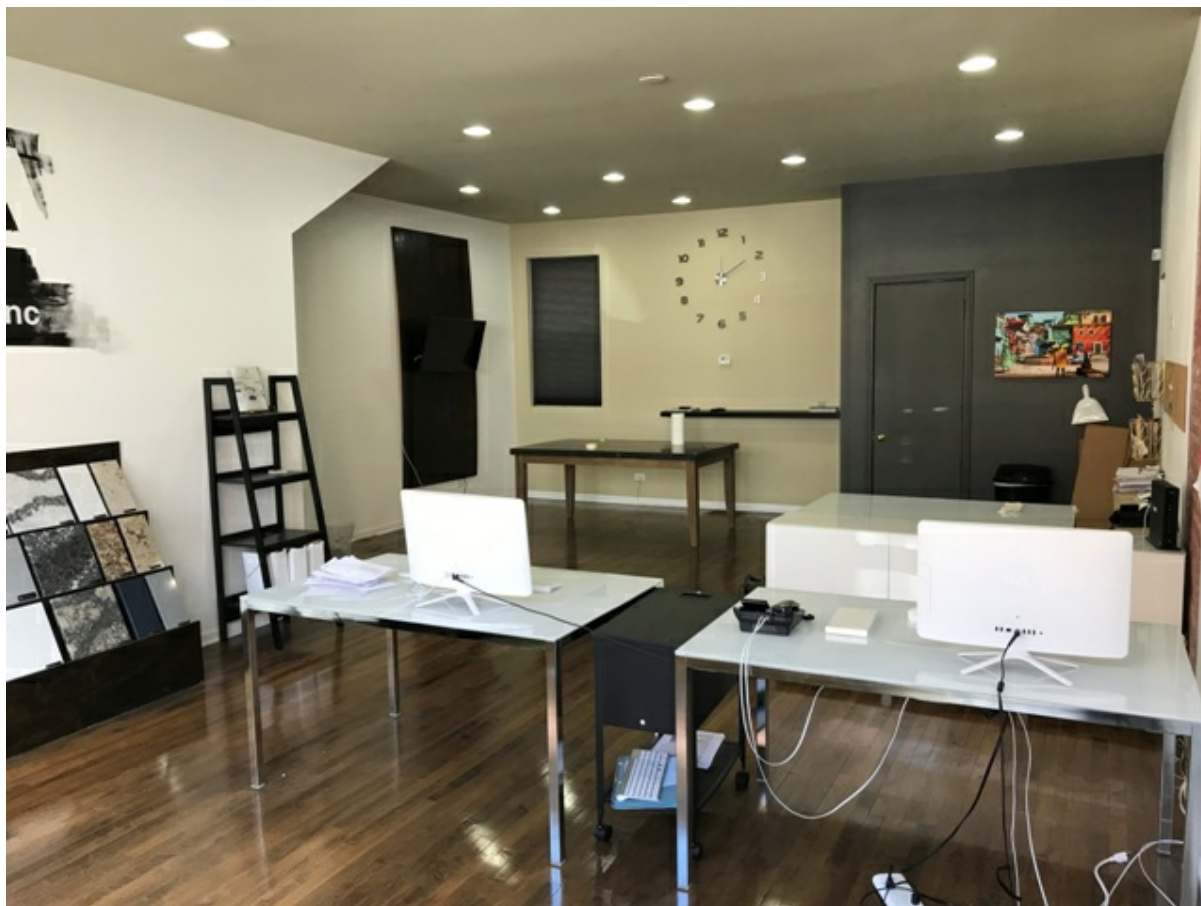
ZONING: B3-2

BUILDING SQ FT: 1,430

GROSS MONTHLY RENT: **\$1,450**



Patrick Duffy 773-736-3600 Duffy@straussrealty.com





COMMERCIAL, RETAIL, OFFICE, OTHER
1921 W. BELMONT AVE.
CHICAGO, ILLINOIS 60657



Patrick Duffy 773-736-3600 Duffy@straussrealty.com